



## RENAULT



### EM24.50.400/G

Taśma Milleri  
Lifting Pins  
Tragbolzen mit Fallringsicherung



### EM24.50.400/G

Taśma Braketeri  
Lifting Brackets with Pins  
Tragwange mit Tragbolzen nach



### EM24.52.100/J

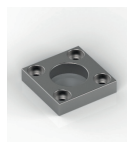
Kılavuz Kolon  
Guide Post  
Führungssäule



### EM24.52.100/J

Kolon Segmanları  
Guide Post Retainer Ring  
Haltering für Führungssäule

AFNOR



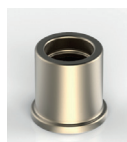
### EM24.52.100/J

Kolon Tutucu Flaşlar  
Flange for Median Retaining Column  
Haltestück für Führungssäule



### EM24.52.100/J

Faturalı Grafitli Kılavuz Burçlar  
Guide Bushes with Collar, Self-lubricating  
Führungsbuchsen mit Festschmierstoff



### EM24.52.100/J

Faturalı Grafitli Kılavuz Burçlar  
Guide Bushes with Collar, Oil Groove  
Führungsbuchsen mit Bund, Ölschmiernut



### EM24.52.100/J

Burç Tutucu  
Toe Clamp  
Haltestück

AFNOR



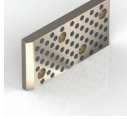
### EM24.52.100/J

Burç Tutucu  
Toe Clamp  
Haltestück



### EM24.52.100/J

Konik Merkezleme Üniteleri  
Locating Cone  
Kegeldistanz



### EM24.52.300/C

Grafitli Bronz Kılavuz Plakalar  
Wear Plates, Self-lubricating  
Gleitplatten Bronze mit Festschmierstoff

AFNOR



### EM24.52.300/C

Çelik Kanallı Kılavuz Plakalar  
Wear Plates, Self-lubricating  
Gleitplatten, Stahl mit Ölschmiernut

AFNOR



### EM24.52.500/B

Grafitli Bronz L Kılavuz Plakalar  
L Shaped Wear Plates, Self-lubricating  
Winkelleisten Bronze mit Festschmierstoff



### EM24.52.500/B

Kızaklama Plakası  
Slider  
Führungsleite

10



## RENAULT



**EM24.55.100/G**

Emniyet Pimleri  
Pad Retainer Pins  
Steckbolzen



**EM24.59.500/K**

Zimba  
Stamp  
Buchstabenstempel



**EM24.55.100/G**

Emniyet Pimleri  
Pad Retainer Pins  
Steckbolzen



**EM24.55.100/G**

Emniyet Pimleri için Amortisör Vulkolonlar  
Shock Absorber for Pad Retainer Pins  
Halteelemente



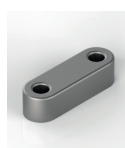
**EM24.59.500/K**

Konum İz Zimbasi  
Visual Locator Setting Punch  
Endkontrollstempel



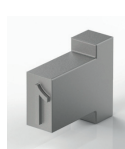
**EM24.59.500/K**

Zimba Tutucu  
Stamp Retainer  
Halteplatte



**EM24.59.500/K**

Zimba Destek Plakası  
Backing Plate  
Druckplatte



**EM24.59.500/K**

Zimba  
Stamp  
Buchstabenstempel

10