















GSB[®]



1 TAŞIMA ELEMENLARI
LIFTING ELEMENTS
TRAGELEMENTE










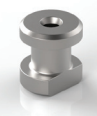





Index		Index	
Contents	Page	Contents	Page
 <p>C101-02 Taşıma Pimleri Lifting Pins Tragschrauben VDI 3366</p>	1.5	 <p>C103-04 Taşıma Milleri Lifting Pins Tragbolzen mit Fallringsicherung BMW</p>	1.12
 <p>C101-04 Taşıma Braketleri Lifting Brackets Tragzapfen VDI 3366</p>	1.6	 <p>C103-04 Taşıma Milleri Lifting Pins Tragbolzen mit Fallringsicherung FORD</p>	1.13
 <p>C101-05 Emniyet Plakalı Taşıma Braketleri Lifting Brackets with Rope Stop Safety Tragzapfen mit Seilsicherung BMW</p>	1.7	 <p>C103-04 Taşıma Milleri Lifting Pins Tragbolzen mit Fallringsicherung FCA</p>	1.14
 <p>C103-01 Taşıma Milleri Lifting Pins Tragbolzen mit Fallringsicherung VDI 3366</p>	1.8	 <p>C103-05 Taşıma Milleri Lifting Pins Tragbolzen mit Fallringsicherung und Feder nach PSA - RENAULT</p>	1.15
 <p>C103-01 Taşıma Milleri Lifting Pins Tragbolzen mit Fallringsicherung MERCEDES - BENZ</p>	1.9	 <p>C103-06 Taşıma Milleri Lifting Pins Tragbolzen mit Fallringsicherung OPEL - GM</p>	1.16
 <p>C103-02 Taşıma Milleri Lifting Pins Tragbolzen mit Fallringsicherung und Feder nach FCA</p>	1.10	 <p>C103-07 Taşıma Milleri Lifting Pins Ersatztragbolzen für Tragwange FCA</p>	1.17
 <p>C103-03 Taşıma Milleri Lifting Pins Tragbolzen mit Fallringsicherung FORD</p>	1.11	 <p>C103-09 Taşıma Milleri Lifting Pins Tragbolzen mit Fallringsicherung und Feder nach VW/AUDI</p>	1.18

1



Index		Index	
Contents	Page	Contents	Page
 <p>C104-01 Taşıma Milleri için Burçlar Bush for Lifting Pins Stahlbuchsen für Transportwangen VDI - BAK</p>	1.19	 <p>C102-02 Taşıma Mapaları Eye Bolts Ringschrauben DIN 580</p>	1.26
 <p>C105-01 Taşıma Braketleri Lifting Brackets with Pins Tragwange mit Tragbolzen nach RENAULT</p>	1.20	 <p>C102-03 Döner Taşıma Mapaları H.T. Rotating Eyebolts H. T. Ringschrauben H.T.</p>	1.27
 <p>C105-02 Taşıma Braketleri Lifting Brackets with Pins Tragwange mit Tragbolzen nach FCA</p>	1.21	 <p>C102-04 Klempli Döner Taşıma Mapaları Rotating Eyebolts with Clamp Lastbock</p>	1.28
 <p>C105-03 Taşıma Braketleri Lifting Brackets with Pins Tragwange mit Tragbolzen nach BMW</p>	1.22	 <p>C102-05 Halkalı Döner Taşıma Mapaları Rotating Eyebolts with Ring Wirbelbock</p>	1.29
 <p>C105-04 Taşıma Braketleri Lifting Brackets with Pins Tragwange mit Tragbolzen nach VW/AUDI</p>	1.23		
 <p>C105-05 Dişli Taşıma Mapası Threaded Steel Insert Gewindeinsatz Aus Stahl FCA - FORD</p>	1.24		
 <p>C102-01 Taşıma Mapaları 8.8 Eye Bolts 8.8 Ringschrauben 8.8</p>	1.25		

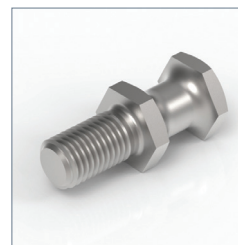


C101-02

Taşıma Pimleri
Lifting Pins
Tragschrauben

1

CE



Material :
C45E
700 ÷ 800 N/mm²



UYARI!

Güvenlik nedeniyle kalıp ağırlığı iki adet taşıma piminin taşıyabileceği maksimum yük miktarını aşmamalıdır.

Maksimum yükü göz ardı etmeyiniz.

WARNING!

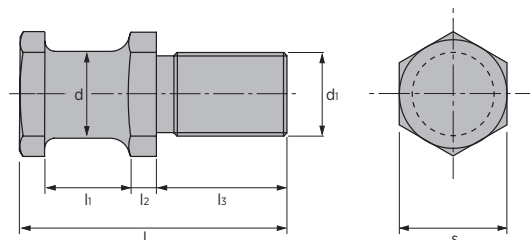
For safety reasons, the weight of the tool has to be supported by just two lifting pins.

Respect the max. load.

ACHTUNG!

Aus Sicherheitsgründen achten Sie immer dass zwei Tragbolzen das gesamte Werkzeugs gewicht tragen müssen.

Maximale Nutzlast beachten.



CODE	Max. Load (kg)	Max. Die Weight (kg)	d ±0,1	d ₁	l ±1	l ₁	l ₂	l ₃ ±0,5	s
C101-02-016-016	250	500	16	M16	58	20	5,5	28	24
C101-02-020-020	500	1000	20	M20	68	22	6,5	34	30
C101-02-025-024	1000	2000	25	M24	78	25	8	38	36
C101-02-032-030	1500	3000	32	M30	95	32	10	45	41
C101-02-040-036	2500	5000	40	M36	118	40	12	56	50

1

GSB

C101-04

Taşıma Braketleri
Lifting Brackets
Tragzaphen



Material :
C45E
700 ÷ 800 N/mm²



UYARI!

Güvenlik nedeniyle kalıp ağırlığı iki adet taşıma piminin taşıyabileceği maksimum yük miktarını aşmamalıdır.

Maksimum yükü göz ardı etmeyiniz.

WARNING!

For safety reasons, the weight of the tool has to be supported by just two lifting brackets.

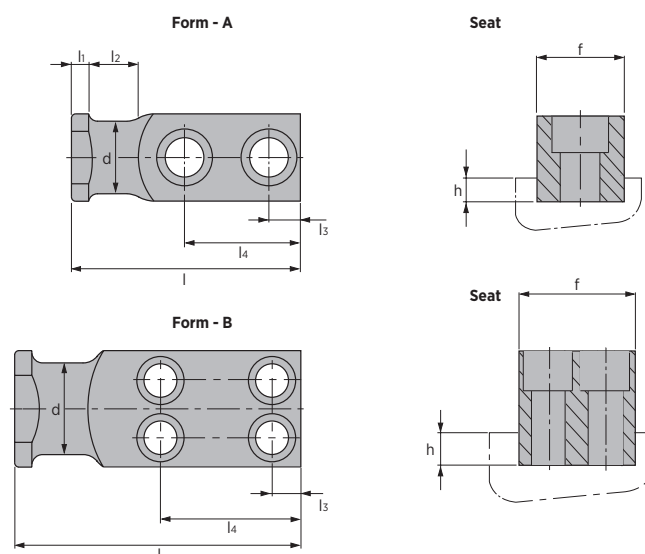
Respect the max. load.

ACHTUNG!

Aus Sicherheitsgründen achten Sie immer dass zwei Tragbolzen das gesamte Werkzeugs gewicht tragen müssen.

Maximale Nutzlast beachten.

CE



CODE	Max. Load (kg)	Max. Die Weight (kg)	Form	d	l	h	l ₂	l ₃	l ₄	f +1/+0,5	h	DIN EN ISO 4762 - Screw 8.8
C101-04-020-080	320	640	A	16	80	6	20	10	44	20	6	M8x30
C101-04-025-090	630	1260	A	20	90	8	25	10	47	25	8	M10x35
C101-04-035-100	1250	2500	A	25	100	8	30	12	50	35	10	M12x40
C101-04-040-120	2000	4000	A	32	120	10	32	16	62	40	10	M16x55
C101-04-050-140	3200	6400	A	40	140	10	40	18	72	50	12	M20x70
C101-04-060-160	5000	10000	A	50	160	12	45	22	81	60	14	M24x70
C101-04-080-200	8000	16000	B	63	200	12	50	20	98	80	16	M20x100
C101-04-100-250	12500	25000	B	80	250	15	65	25	125	100	18	M24x110
C101-04-120-300	20000	40000	B	100	300	15	80	30	155	120	20	M30x130



C101-05

Emniet Plakalı Taşıma Braketleri
Lifting Bracket with Rope Safety Stop
Tragzapfen mit Seilsicherung

1

Material :
C45E
700 ÷ 800 N/mm²

UYARI!
Güvenlik nedeniyle kalıp ağırlığı iki adet taşıma piminin taşıyabileceği maksimum yük miktarını aşmamalıdır.

Maksimum yükü göz ardı etmeyiniz.

WARNING!
For safety reasons, the weight of the tool has to be supported by just two lifting brackets.

Respect the max. load.

ACHTUNG!
Aus Sicherheitsgründen achten Sie immer dass zwei Tragbolzen das gesamte Werkzeugs gewicht tragen müssen.

Maximale Nutzlast beachten.

CODE	Max. Load (kg)	Max. Die Weight (kg)	Form	d	d ₁	l	l ₁	l ₂	l ₃	l ₄	f +1/ +0,5	h	DIN EN ISO 4762 - Screw 8.8
C101-05-020-080	320	640	A	16	60	80	6	20	10	44	20	6	M8x30
C101-05-025-090	630	1260	A	20	70	90	8	25	10	47	25	8	M10x35
C101-05-035-100	1250	2500	A	25	70	100	8	30	12	50	35	10	M12x40
C101-05-040-120	2000	4000	A	32	110	120	10	32	16	62	40	10	M16x55
C101-05-050-140	3200	6400	A	40	110	140	10	40	18	72	50	12	M20x70
C101-05-060-160	5000	10000	A	50	150	160	12	45	22	81	60	14	M24x70
C101-05-080-200	8000	16000	B	63	150	200	12	50	20	98	80	16	M20x100
C101-05-100-250	12500	25000	B	80	150	250	15	65	25	125	100	18	M24x110
C101-05-120-300	20000	40000	B	100	150	300	15	80	30	155	120	20	M30x130

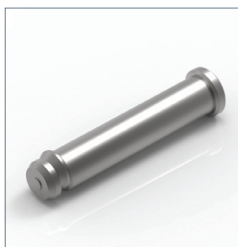
1

GSB®

C103-01

Taşıma Milleri
Lifting Pins
Tragbolzen mit Fallringsicherung

CE



UYARI!

Güvenlik nedeniyle kalıp ağırlığı iki adet taşıma piminin taşıyabileceği maksimum yük miktarını aşmamalıdır.

Maksimum yükü göz ardı etmeyiniz.

WARNING!

For safety reasons, the weight of the tool has to be supported by just two lifting pins.

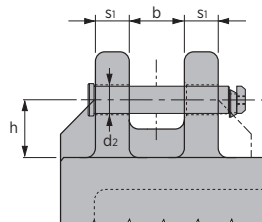
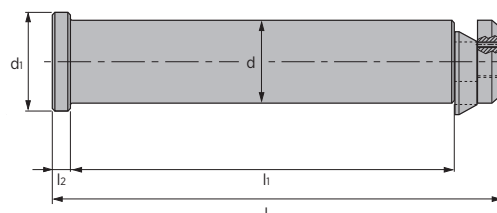
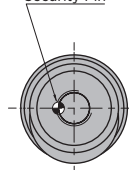
Respect the max. load.

ACHTUNG!

Aus Sicherheitsgründen achten Sie immer dass zwei Tragbolzen das gesamte Werkzeuges gewicht tragen müssen.

Maximale Nutzlast beachten.

Security Pin



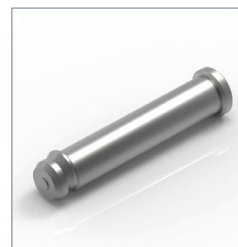
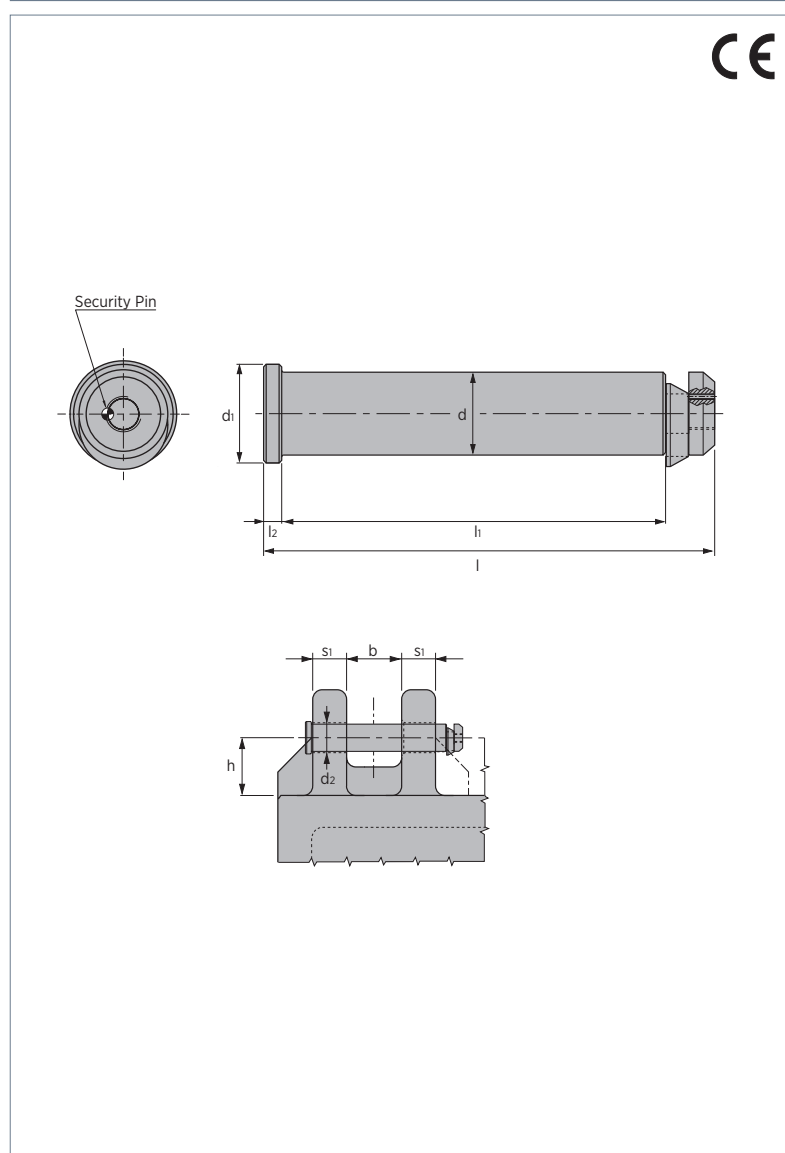
CODE	Max. Load (kg)	Max. Die Weight (kg)	d _{h11}	d ₁	l ₊₁	h ₊₁	l ₂	d ₂₊₁	h	b	s ₁	Material
C103-01-032-175	3200	6400	32	40	175	145	10	34	63	60	40	C45E
C103-01-040-225	5000	10000	40	50	225	188	10	42	80	80	50	C45E
C103-01-050-273	8000	16000	50	60	273	230	11	52	100	100	60	C45E
C103-01-063-347	12500	25000	63	75	347	295	14	65	125	120	80	C45E
C103-01-076-422	31500	63000	76	95	422	360	15	78	160	140	100	42CrMo4+QT



C103-01

Taşıma Milleri
Lifting Pins
Tragbolzen mit Fallringsicherung

1



Material:
42CrMo4+QT



UYARI!

Güvenlik nedeniyle kalıp ağırlığı iki adet taşıma piminin taşıyabileceği maksimum yük miktarını aşmamalıdır.

Maksimum yükü göz ardı etmeyiniz.

WARNING!

For safety reasons, the weight of the tool has to be supported by just two lifting pins.

Respect the max. load.

ACHTUNG!

Aus Sicherheitsgründen achten Sie immer dass zwei Tragbolzen das gesamte Werkzeugs gewicht tragen müssen.

Maximale Nutzlast beachten.

CODE	Max. Load (kg)	Max. Die Weight (kg)	d h11	d1	l +1	l1 +1	l2	d2 +1	h	b	s1
C103-01-032-017	3200	6400	32	40	175	145	10	34	63	60	40
C103-01-040-022	5000	10000	40	50	225	188	10	42	80	80	50
C103-01-050-027	8000	16000	50	60	273	230	11	52	100	100	60
C103-01-063-034	12500	25000	63	75	347	295	14	65	125	120	80
C103-01-076-042	31500	63000	76	95	422	360	15	78	160	140	100

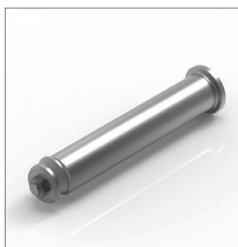
1

GSB

C103-02

Taşıma Milleri
Lifting Pins

Tragbolzen mit Fallringsicherung und Feder nach



Material :
42CrMo4+QT



- * Sadece değişim için
- * Only for replacement
- * Nur für Reparatur

UYARI!

Güvenlik nedeniyle kalıp ağırlığı iki adet taşıma piminin taşıyabileceği maksimum yük miktarını aşmamalıdır.

Maksimum yükü göz ardı etmeyiniz.

WARNING!

For safety reasons, the weight of the tool has to be supported by just two lifting pins.

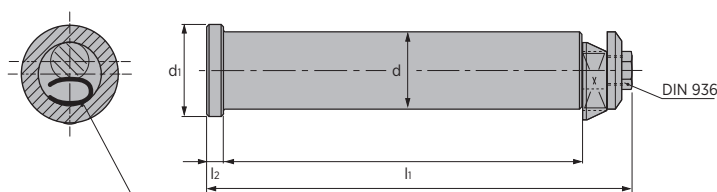
Respect the max. load.

ACHTUNG!

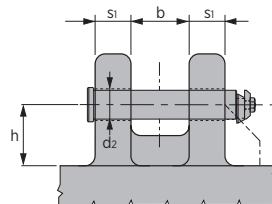
Aus Sicherheitsgründen achten Sie immer dass zwei Tragbolzen das gesamte Werkzeugs gewicht tragen müssen.

Maximale Nutzlast beachten.

CE



The part is supplied complete of polypropylene spring



CODE	Max. Load (kg)	Max. Die Weight (kg)	d _{h1}	d ₁	l	l ₁	l ₂	d ₂	h	b	s ₁
C103-02-029-150	4000	8000	29	38	178,5	150	6	30	60	60	40
C103-02-033-170	7000	14000	33	43	200,5	170	6	35	65	60	50
C103-02-043-195	10000	20000	43	53	233	195	8	45	85	80	50
*C103-02-053-235	16000	32000	53	65	282	235	10	55	105	100	60
C103-02-053-180	16000	32000	53	65	227	180	10	55	75	65	50
C103-02-063-215	26000	52000	63	78	272,5	215	12	65	100	80	60
*C103-02-063-295	25000	50000	63	78	352,5	295	12	65	130	120	80
*C103-02-078-355	40000	80000	78	95	421,5	355	14	81	150	140	100



C103-03

Taşıma Milleri
Lifting Pins

Tragbolzen mit Fallringsicherung und Feder nach

1



Material :
42CrMo4+QT



UYARI!
Güvenlik nedeniyle kalıp ağırlığı iki adet taşıma piminin taşıyabileceği maksimum yük miktarını aşmamalıdır.

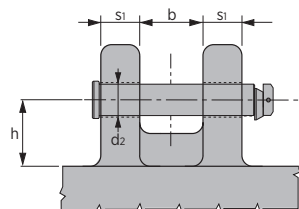
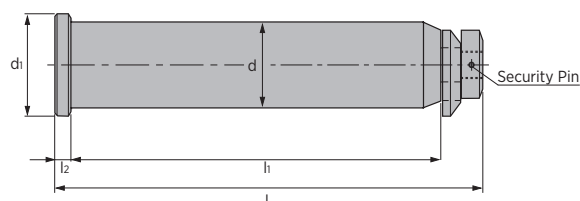
Maksimum yükü göz ardı etmeyiniz.

WARNING!
For safety reasons, the weight of the tool has to be supported by just two lifting pins.

Respect the max. load.

ACHTUNG!
Aus Sicherheitsgründen achten Sie immer dass zwei Tragbolzen das gesamte Werkzeugs gewicht tragen müssen.

Maximale Nutzlast beachten.



CODE	Max. Load (kg)	Max. Die Weight (kg)	d -0,3	d1	l ±1	l1	l2	d2	h min.	b	s1
C103-03-035-125	1500	3000	35	45	165	125	10	37	60	50	30
C103-03-050-190	5500	10050	50	63	230	190	10	52	130	70	50
C103-03-063-280	23000	45500	63	76	320	280	10	65	145	100	80
C103-03-080-320	30000	60000	80	89	370	320	15	82	145	100	100

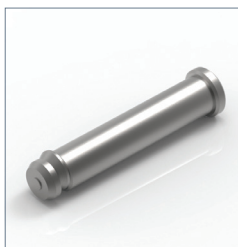
1

GSB®

C103-04

Taşıma Milleri
Lifting Pins
Tragbolzen mit Fallringsicherung

CE



Material :
C45E



UYARI!

Güvenlik nedeniyle kalıp ağırlığı iki adet taşıma piminin taşıyabileceği maksimum yük miktarını aşmamalıdır.

Maksimum yükü göz ardı etmeyiniz.

WARNING!

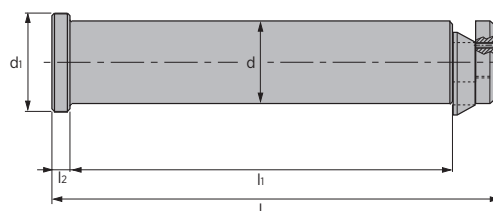
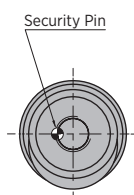
For safety reasons, the weight of the tool has to be supported by just two lifting pins.

Respect the max. load.

ACHTUNG!

Aus Sicherheitsgründen achten Sie immer dass zwei Tragbolzen das gesamte Werkzeugs gewicht tragen müssen.

Maximale Nutzlast beachten.



CODE	Max. Load (kg)	Max. Die Weight (kg)	d h11	d1	l +1	lh	lz
C103-04-030-158	3200	6400	30	40	158	129	10
C103-04-040-187	5000	10000	40	50	187	155	10
C103-04-050-220	8000	16000	50	60	220	180	11
C103-04-060-246	12500	25000	60	70	246	205	11
C103-04-080-305	18000	36000	80	90	305	205	12



C103-04

Taşıma Milleri
Replacement Lifting Pin for Lifting Bracket
Ersatztragbolzen für Tragwange

1



Material :
42CrMo4+QT



UYARI!

Güvenlik nedeniyle kalıp ağırlığı iki adet taşıma piminin taşıyabileceği maksimum yük miktarını aşmamalıdır.

Maksimum yükü göz ardı etmeyiniz.

WARNING!

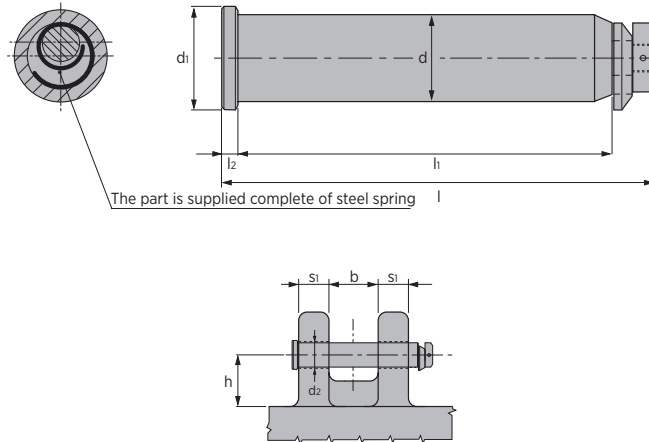
For safety reasons, the weight of the tool has to be supported by just two lifting pins.

Respect the max. load.

ACHTUNG!

Aus Sicherheitsgründen achten Sie immer dass zwei Tragbolzen das gesamte Werkzeugs gewicht tragen müssen.

Maximale Nutzlast beachten.



CODE	Max. Load (kg)	Max. Die Weight (kg)	d -0,3	d ₁	l	l _i	l _z	d ₂	h min.	b	s ₁
C103-04-050-190	5500	10050	50	63	230	190	10	52	130	70	50
C103-04-063-280	23000	45500	63	76	320	280	10	65	145	100	80
C103-04-080-320	30000	60000	80	89	370	320	15	82	145	100	100

1

GSB

C103-04

Taşıma Milleri
Lifting Pins
Tragbolzen mit Fallringsicherung



CE

Material :
42CrMo4+QT



UYARI!

Güvenlik nedeniyle kalıp ağırlığı iki adet taşıma piminin taşıyabileceği maksimum yük miktarını aşmamalıdır.

Maksimum yükü göz ardı etmeyiniz.

WARNING!

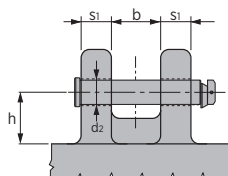
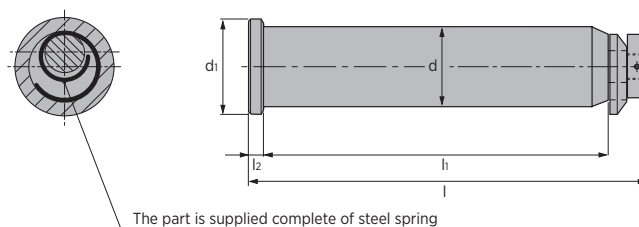
For safety reasons, the weight of the tool has to be supported by just two lifting pins.

Respect the max. load.

ACHTUNG!

Aus Sicherheitsgründen achten Sie immer dass zwei Tragbolzen das gesamte Werkzeugs gewicht tragen müssen.

Maximale Nutzlast beachten.



CODE	Max. Load (kg)	Max. Die Weight (kg)	d -0,3	d ₁	l	l ₁	l ₂	d ₂	h min.	b	s ₁
C103-04-050-019	10000	20000	50	63	230	190	10	52	70	85	50
C103-04-063-028	20000	40000	63	76	320	280	10	65	100	110	80
C103-04-080-032	40000	80000	80	89	375	320	15	82	105	110	100

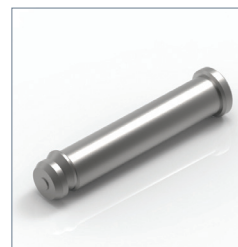
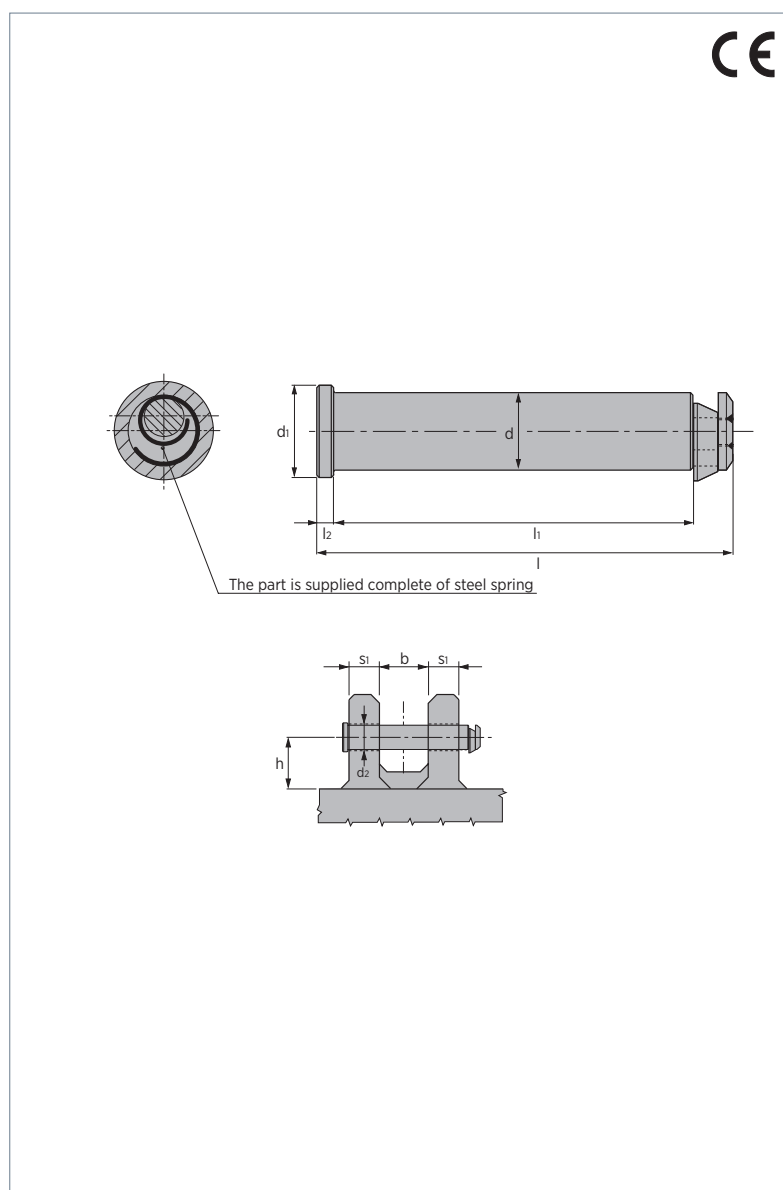


C103-05

Taşıma Milleri
Lifting Pins

Tragbolzen mit Fallringsicherung und Feder nach

1



Material :
C45E



UYARI!

Güvenlik nedeniyle kalıp ağırlığı iki adet taşıma piminin taşıyabileceği maksimum yük miktarını aşmamalıdır.

Maksimum yükü göz ardı etmeyiniz.

WARNING!

For safety reasons, the weight of the tool has to be supported by just two lifting pins.

Respect the max. load.

ACHTUNG!

Aus Sicherheitsgründen achten Sie immer dass zwei Tragbolzen das gesamte Werkzeuges gewicht tragen müssen.

Maximale Nutzlast beachten.

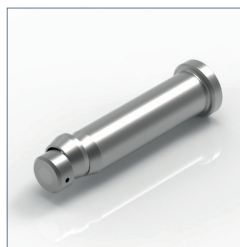
CODE	Max. Load (kg)	Max. Die Weight (kg)	d h11	d1	l ±1	l1	l2	d2 +0,5	h	b	s1
C103-05-032-132	6000	12000	32	40	154	132	6	34	55	50	37,5
C103-05-040-170	9000	18000	40	50	197,5	170	8	42	70	65	47,5
C103-05-050-212	14000	28000	50	63	247,5	212	10	52	90	80	60
C103-05-063-265	22500	45000	63	80	309	265	12	65	100	100	75

1

GSB®

C103-06

Taşıma Milleri
Lifting Pins
Tragbolzen mit Fallringsicherung



Material :
42CrMo4+QT



UYARI!

Güvenlik nedeniyle kalıp ağırlığı iki adet taşıma piminin taşıyabileceği maksimum yük miktarını aşmamalıdır.

Maksimum yükü göz ardı etmeyiniz.

WARNING!

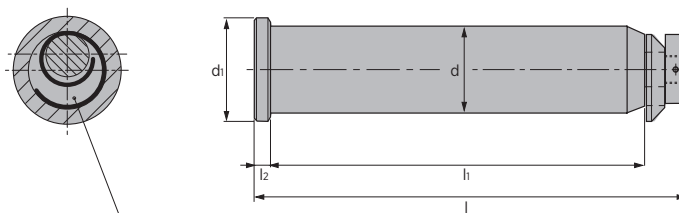
For safety reasons, the weight of the tool has to be supported by just two lifting pins.

Respect the max. load.

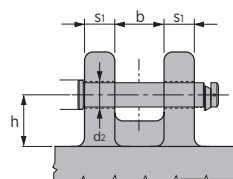
ACHTUNG!

Aus Sicherheitsgründen achten Sie immer dass zwei Tragbolzen das gesamte Werkzeugs gewicht tragen müssen.

Maximale Nutzlast beachten.



The part is supplied complete of steel spring



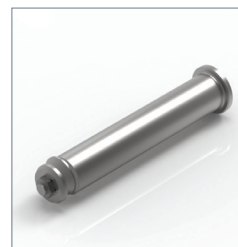
CODE	Max. Load (kg)	Max. Die Weight (kg)	d -0,2	d ₁	l +1	h +1	l ₂	d ₂	h	b	s ₁
C103-06-032-155	3400	6800	32	40	177	155	5	34	65	70	40
C103-06-040-188	5650	11300	40	50	220	188	7	42	85	80	50
C103-06-050-230	8950	17900	50	60	270	230	9	52	100	100	60
C103-06-063-295	14350	28700	63	75	342	295	16	65	125	120	80
C103-06-080-335	26700	53400	80	89	387	335	16	82	160	120	100



C103-07

Taşıma Milleri
Lifting Pins
Ersatztragbolzen für Tragwange

1



Material :
C45E



UYARI!

Güvenlik nedeniyle kalıp ağırlığı iki adet taşıma piminin taşıyabileceği maksimum yük miktarını aşmamalıdır.

Maksimum yükü göz ardı etmeyiniz.

WARNING!

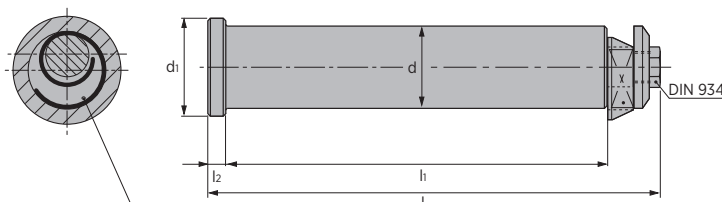
For safety reasons, the weight of the tool has to be supported by just two lifting pins.

Respect the max. load.

ACHTUNG!

Aus Sicherheitsgründen achten Sie immer dass zwei Tragbolzen das gesamte Werkzeugs gewicht tragen müssen.

Maximale Nutzlast beachten.



The part is supplied complete of polypropylene spring

DIN 934

CODE	Max. Load (kg)	Max. Die Weight (kg)	d h11	d1	l	h	lz
C103-07-00600	600	1200	15,6	25	102,5	77	6
C103-07-01000	1000	2000	20,6	30	113,5	86	6
C103-07-02000	2000	4000	25,6	35	128,5	100	6
C103-07-04000	4000	8000	33	43	166,5	135	6
C103-07-07000	7000	14000	43	53	210,5	175	8

1

GSB®

C103-09

Taşıma Milleri
Lifting Pins

Tragbolzen mit Fallringsicherung und Feder nach



UYARI!

Güvenlik nedeniyle kalıp ağırlığı iki adet taşıma piminin taşıyabileceği maksimum yük miktarını aşmamalıdır.

Maksimum yükü göz ardı etmeyiniz

WARNING!

For safety reasons, the weight of the tool has to be supported by just two lifting pins.

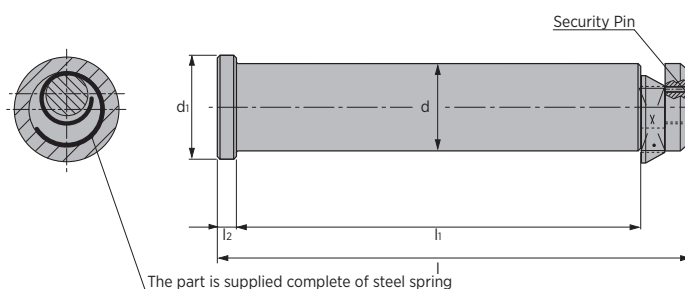
Respect the max. load.

ACHTUNG!

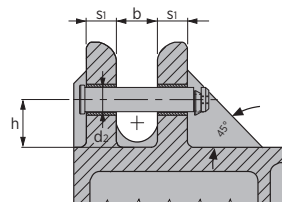
Aus Sicherheitsgründen achten Sie immer dass zwei Tragbolzen das gesamte Werkzeugs gewicht tragen müssen.

Maximale Nutzlast beachten.

CE



The part is supplied complete of steel spring



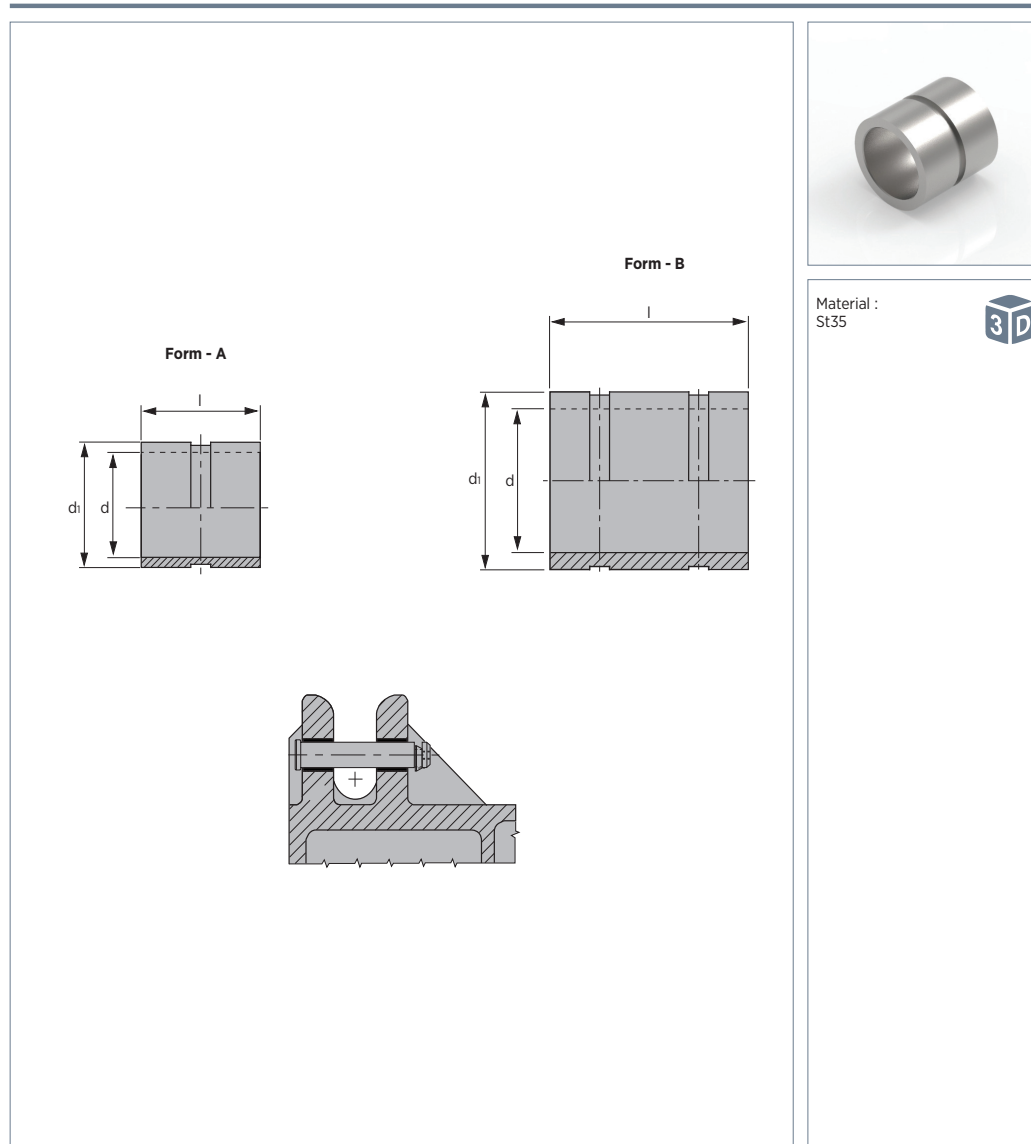
CODE	Max. Load (kg)	Max. Die Weight (kg)	d _{h11}	d ₁	l	l ₁	l ₂	d ₂	h	b	s ₁	Material
* C103-09-032-175	3200	6400	32	40	175	145	10	34	63	60	40	C45E
* C103-09-040-225	5000	10000	40	50	225	188	10	42	80	80	50	C45E
C103-09-050-221	8000	16000	50	60	221	182	11	-	-	-	-	C45E
* C103-09-050-273	8000	16000	50	60	273	230	11	52	100	100	60	C45E
C103-09-063-277	12500	25000	63	75	277	225	14	-	-	-	-	C45E
* C103-09-063-347	12500	25000	63	75	347	295	14	65	125	120	80	C45E
* C103-09-076-422	31500	63000	76	95	422	360	15	78	160	140	100	42CrMo4+QT



C104-01

Taşıma Milleri için Burçlar
Bush for Lifting Pins
Buchse für Tragbolzen

1



Material :
St35



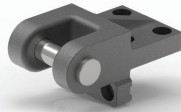
CODE	Form	d	d ₁	l
C104-01-034-040	A	34	44	40
C104-01-042-050	A	42	52	50
C104-01-052-060	A	52	62	60
C104-01-065-080	A	65	75	80
C104-01-078-1001	B	78	100	100
C104-01-078-1002	B	78	105	100

1



C105-01

Taşıma Braketleri
Lifting Brackets with Pins
Tragwange mit Tragbolzen



- 1 Material: C45E 800 ± 1000 N/mm²
- 2 C103-05
- 3 KEY DIN 6885

Screws not included.

UYARI!

Güvenlik nedeniyle kalıp ağırlığı iki adet taşıma braketinin taşıyabileceği maksimum yük miktarını aşmamalıdır.

Maksimum yükü göz ardı etmeyiniz.

WARNING!

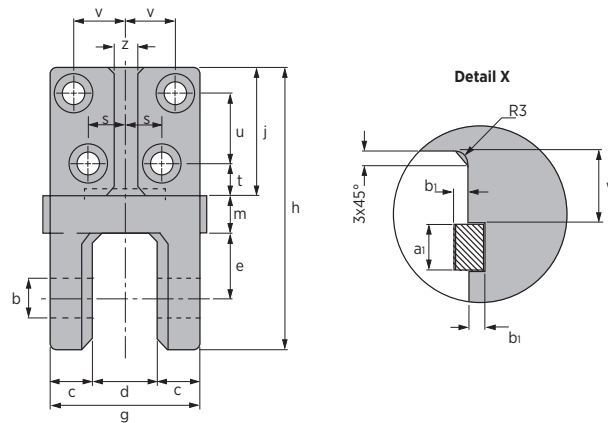
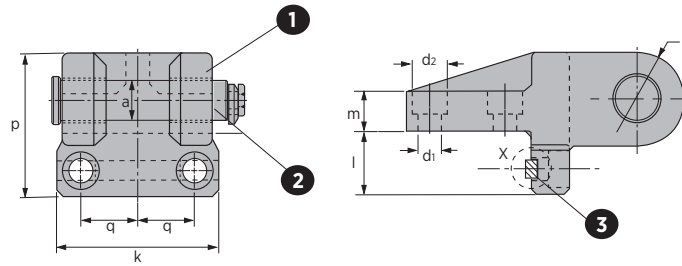
For safety reasons, the weight of the tool has to be supported by just two lifting brackets.

Respect the max. load.

ACHTUNG!

Aus Sicherheitsgründen achten Sie immer dass zwei Tragwagen das gesamte Werkzeugs gewicht tragen müssen.

Maksimale Nutzlast beachten.



CODE	Max. Load (kg)	Max. Die Weight (kg)	a	b H13	c	d	d1 H13	d2 H13	e	g	h	j
C105-01-04000	4000	8000	32	33	35	55	18	28	55	125	221	100
C105-01-06300	6300	12600	40	41	50	60	22	36	60	160	270	125

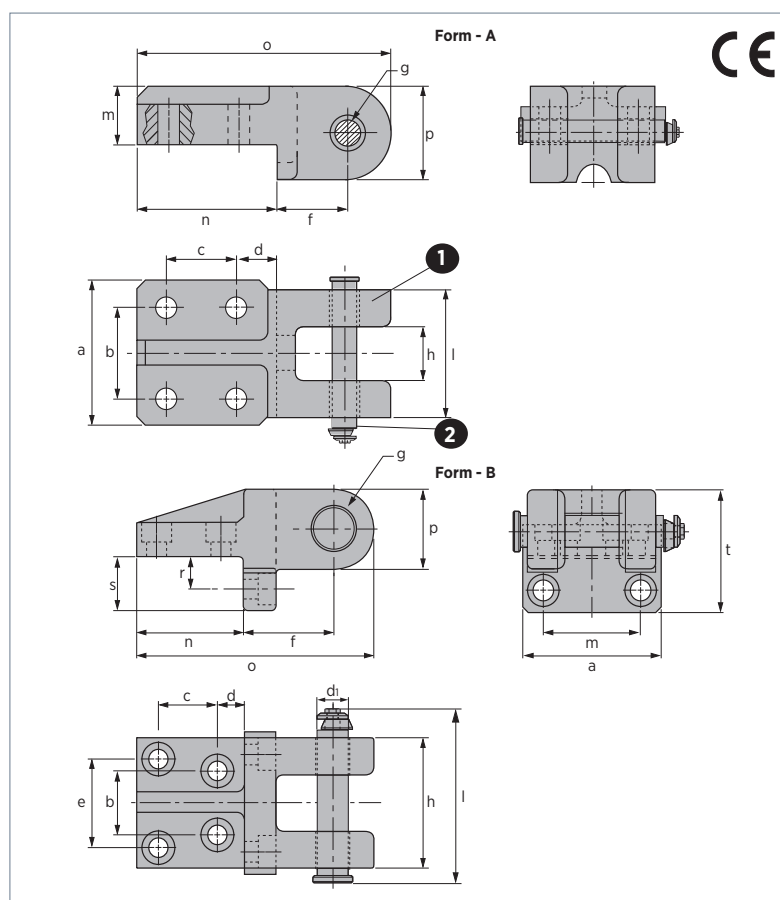
CODE	k	l	m	p	q	r	s	t	u	v	w	z	a1 E9	b1 +0,1
C105-01-04000	135	50	30	111	48	36	28	20	60	42	24	20	14	4,5
C105-01-06300	180	60	40	140	65	45	40	30	70	55	27	25	16	5



C105-02

Taşıma Braketleri
Lifting Brackets with Pins
Tragwange mit Tragbolzen nach

1



1 Material: C45E

800 ÷ 1000 N/mm²

2 C103-07

Screws not included.

UYARI!

Güvenlik nedeniyle kalıp ağırlığı iki adet taşıma braketinin taşıyabileceği maksimum yük miktarını aşmamalıdır.

Maksimum yükü göz ardı etmeyiniz.

WARNING!

For safety reasons, the weight of the tool has to be supported by just two lifting brackets.

Respect the max. load.

ACHTUNG!

Aus Sicherheitsgründen achten Sie immer dass zwei Tragwagen das gesamte Werkzeugs gewicht tragen müssen.

Maximale Nutzlast beachten.

CODE	Max. Load (kg)	Max. Die Weight (kg)	Form	a	b	c	d	e	f
C105-02-00600	600	1200	A	80	50	40	22,5	-	39
C105-02-01000	1000	2000	A	90	60	40	27,5	-	42
C105-02-02000	2000	4000	A	100	65	65	32,5	-	60
C105-02-04000	4000	8000	B	135	56	60	20	84	85
C105-02-07000	7000	14000	B	180	80	70	30	110	100

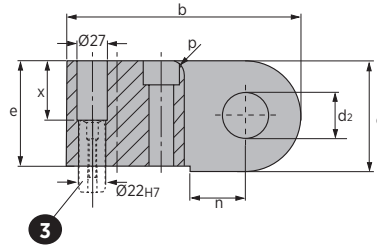
CODE	g	h	l	m	n	o	p	r	s	t
C105-02-00600	16	70	102,5	32	80	145	52	-	-	-
C105-02-01000	21	79	113,5	36	90	160	56	-	-	-
C105-02-02000	26	90	128,5	50	120	215	70	-	-	-
C105-02-04000	34	125	166,5	96	100	221	72	30	50	111
C105-02-07000	44	160	210,5	130	125	270	90	35	60	140

1



C105-03

Taşıma Braketleri
Lifting Brackets with Pins
Tragwange mit Tragbolzen nach



- 1 Material: St52
- 2 C103-04
- 3 Locating Pin M303-02-022045 (x2)

Screws not included.

UYARI!

Güvenlik nedeniyle kalıp ağırlığı iki adet taşıma braketinin taşıyabileceği maksimum yük miktarını aşmamalıdır.

Maksimum yükü göz ardı etmeyiniz.

WARNING!

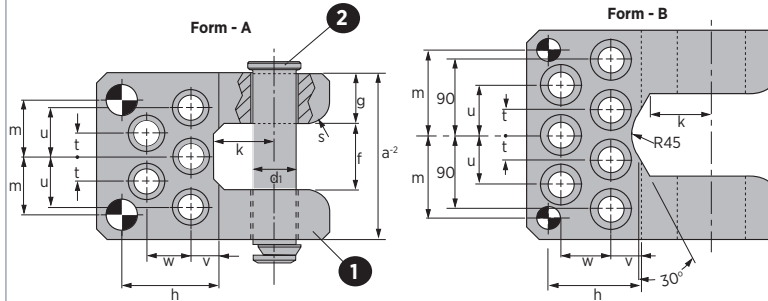
For safety reasons, the weight of the tool has to be supported by just two lifting brackets.

Respect the max. load.

ACHTUNG!

Aus Sicherheitsgründen achten Sie immer dass zwei Tragwagen das gesamte Werkzeugs gewicht tragen müssen.

Maximale Nutzlast beachten.



CODE	Max. Load (kg)	Max. Die Weight (kg)	Form	a	b	c	d ₁	d ₂	e	f	g
C105-03-06400	3200	6400	A	126	185	80	30	32	75	50	38
C105-03-10000	5000	10000	A	150	210	100	40	42	95	60	45
C105-03-16000	8000	16000	A	175	240	120	50	52	115	75	50
C105-03-25000	12500	25000	A	200	300	140	60	62	130	80	60
C105-03-36000	18000	36000	B	250	300	160	80	82	150	100	75

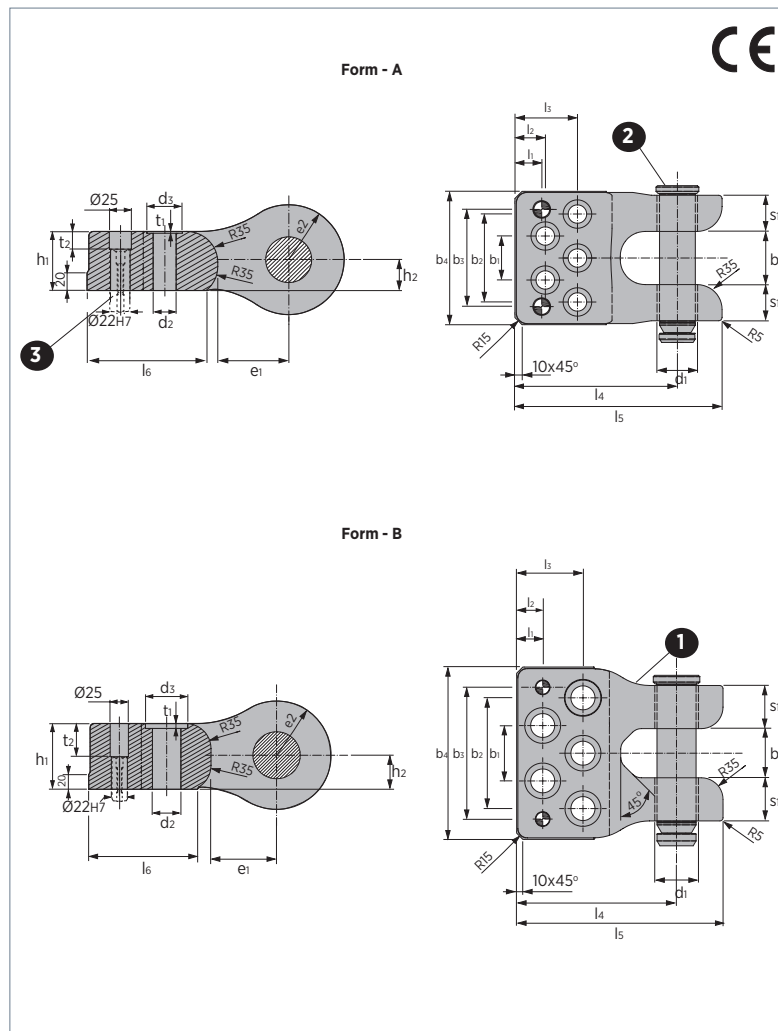
CODE	h ±0,02	k	m	n	p	s	t	u	v	w	x	Civata
C105-03-06400	85	50	45	40	12	16	20	40	30	35	40	M16x80
C105-03-10000	87	55	52	50	12	20	22,5	45	25	40	60	M20x100
C105-03-16000	95	70	62,5	60	16	24	25	50	35	45	80	M24x120
C105-03-25000	145	80	77,5	65	20	30	35	65	60	65	95	M36x160
C105-03-36000	105	95	100	90	20	30	30	60	30	60	115	M30x160



C105-04

Taşıma Braketleri
Lifting Brackets with Pins
Tragwange mit Tragbolzen nach

1



- 1 Material: ST52
- 2 C103-09
- 3 Locating Pin M303-02-022045 (x2)

UYARI!!
Güvenlik nedeniyle kalıp ağırlığı iki adet taşıma braketinin taşıyabileceği maksimum yük miktarını aşmamalıdır.

Maksimum yükü göz ardı etmeyiniz.

WARNING!
For safety reasons, the weight of the tool has to be supported by just two lifting brackets.

Respect the max. load.

ACHTUNG!
Aus Sicherheitsgründen achten Sie immer dass zwei Tragwagen das gesamte Werkzeugs gewicht tragen müssen.

Maximale Nutzlast beachten.

CODE	Max. Load (kg)	Max. Die Weight (kg)	Form	b	b ₁	b ₂	b ₃	b ₄	d ₁	d ₂	d ₃	e ₁	e ₂	h ₁	h ₂
C105-04-08000	8000	16000	A	75	62	124	137	188	52	26	40	80	62,5	67	35
C105-04-12500	12500	25000	B	80	90	180	214	280	65	39	58	90	75	91	47

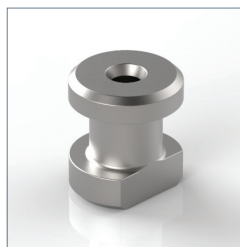
CODE	l ₁	l ₂	l ₃	l ₄	l ₅	l ₆	s ₁	t ₁	t ₂
C105-04-08000	37,5	42,5	87,5	227,5	290	135	51	2	20
C105-04-12500	42	-	107	258	333	150	70	7	46

1

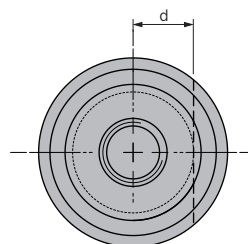
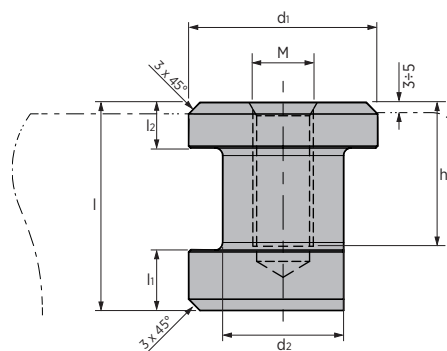
GSB[®]

C105-05

Dişli Taşıma Mapası
Threaded Steel Insert
Gewindeeinsatz Aus Stahl



Material :
42CrMo4+QT



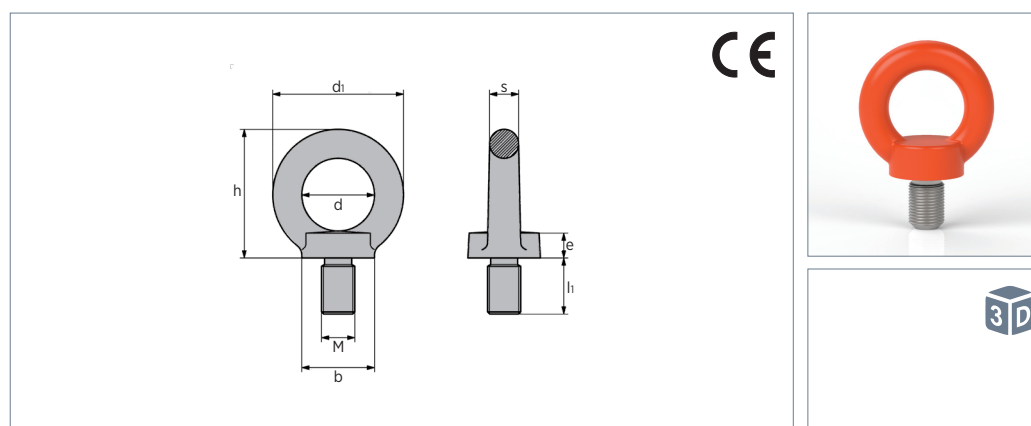
CODE	Max. load 1 point (kg)	Max. load 2÷4 point (kg)	M	d	d ₁	d ₂	l	l ₁	l ₂	h
C105-05-055-1642	1000	2000	M16	16	50	32	55	16	12	42
C105-05-065-2047	2100	4200	M20	18	65	36	65	16	12	47
C105-05-075-2257	2800	5600	M22	20	65	40	75	16	12	57
C105-05-075-2457	3000	6000	M24	20	65	40	75	16	12	57
C105-05-090-3067	5000	10000	M30	30	85	60	90	20	20	67
C105-05-100-3677	6500	13000	M36	40	107	80	100	22	22	77
C105-05-130-4295	7200	14400	M42	40	107	80	130	25	25	95
C105-05-150-48110	8000	16000	M48	40	107	80	150	30	30	110



C102-01

Taşıma Mapaları 8.8
Eye Bolts 8.8
Ringschrauben 8.8

1



CODE	Mxh	d	d ₁	h	b	e	s	Weight (kg)
C102-01-045-006	M6x13	25	45	45	25	10	10	0,090
C102-01-045-008	M8x13	25	45	45	25	10	10	0,090
C102-01-045-010	M10x17	25	45	45	25	10	10	0,110
C102-01-063-012	M12x21	35	63	62	35	14	14	0,270
C102-01-063-014	M14x21	35	63	62	35	14	14	0,290
C102-01-063-016	M16x27	35	63	62	35	14	14	0,310
C102-01-090-020	M20x30	50	90	90	50	20	20	0,860
C102-01-090-024	M24x36	50	90	90	50	20	20	0,900
C102-01-108-030	M30x45	60	108	109	65	24	24	1,700
C102-01-126-036	M36x54	70	126	128	75	26	28	2,150



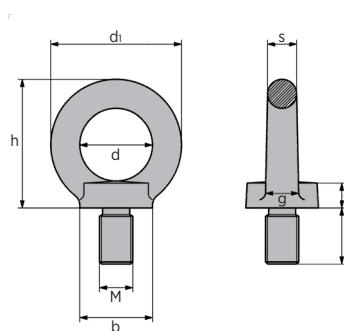
Mxh	0°	0°	0° - 45°	45° - 60°	0° - 45°	45° - 60°	Max. Tightening Couple (Nm)
	Single Leg	2 Legs	2 Legs	2 Legs	3/4 Legs	3/4 Legs	
M6x13	0,4	0,8	0,14	0,1	0,2	0,14	3,5
M8x13	0,8	1,6	0,28	0,2	0,4	0,28	8
M10x17	1	2	0,35	0,25	0,5	0,35	16
M12x21	1,6	3,2	0,56	0,4	0,8	0,56	28
M14x21	3	6	1	0,75	1,5	1	45
M16x27	4	8	1,4	1	2	1,4	70
M20x30	6	12	2,1	1,5	3	2,1	135
M24x36	8	16	2,8	2	4	2,8	230
M30x45	12	24	4,2	3	6	4,2	465
M36x54	16	32	5,6	3,9	7,8	5,4	814

1

GSB

C102-02

Taşıma Mapaları
Eye Bolts
Ringschrauben



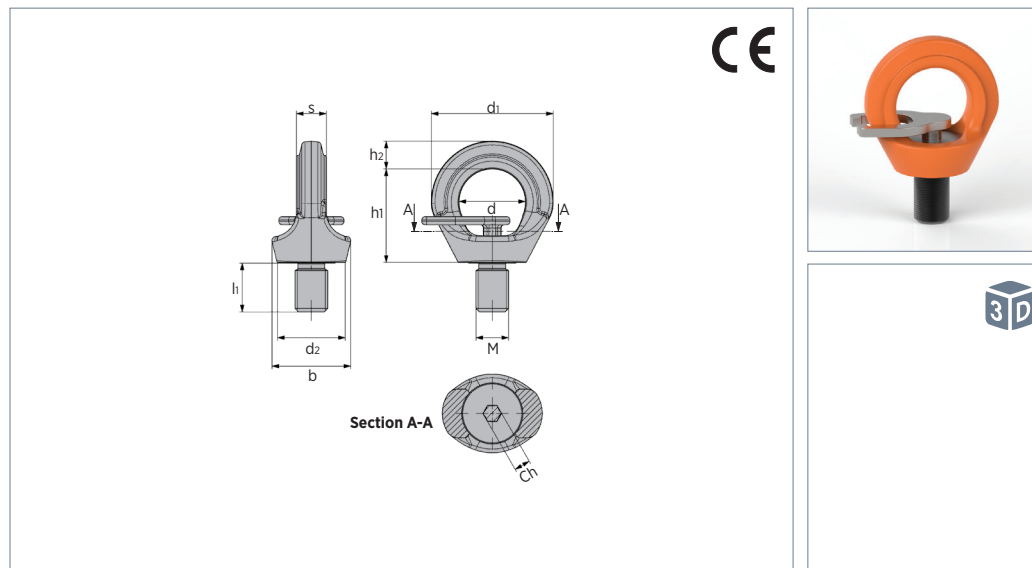
CODE	Mxh	d	d ₁	h	b	e	s	g	Working Load Limit W.L.L. (t)			Max. Tightening Couple (Nm)	Weight (kg)
									⊥	45°	90°		
C102-02-036-006	M6x13	20	36	36	20	6	8	10	75	55	38	3,5	0,060
C102-02-036-008	M8x13	20	36	36	20	6	8	10	140	100	70	8	0,060
C102-02-045-010	M10x17	25	45	45	25	8	10	12	230	170	115	16	0,110
C102-02-054-012	M12x20,5	30	54	53	30	10	12	14	340	240	170	28	0,180
C102-02-063-014	M14x27	35	63	62	35	12	14	16	490	350	245	45	0,270
C102-02-063-016	M16x27	35	63	62	35	12	14	16	700	500	350	70	0,280
C102-02-072-020	M20x30	40	72	71	40	14	16	19	1200	860	600	135	0,450
C102-02-090-024	M24x36	50	90	90	50	18	20	24	1800	1290	900	230	0,740
C102-02-108-030	M30x45	60	108	109	65	22	24	28	3200	2300	1600	465	1,660
C102-02-126-036	M36x54	70	126	128	75	26	28	32	4600	3300	2300	814	2,650



C102-03

Döner Taşıma Mapaları H.T.
Rotating Eyebolts H. T.
Ringschrauben H.T.

1



CODE	Mxh	Working Load Limit W.L.L (t)	d	d ₁	d ₂	h ₁	h ₂	b	s	Ch	Weight (kg)
C102-03-046-008	M8x12	0,3	25	46	25,5	33,7	10	30	9,8	6	0,120
C102-03-046-010	M10x15	0,4	25	46	25,5	33,7	10	30	9,8	6	0,120
C102-03-0555-012	M12x18	0,75	30	55,5	30,6	41,5	12,5	36,5	11,5	8	0,200
C102-03-0645-016	M16x24	1,5	35	64,5	36,5	49,5	14,5	42	15,7	10	0,350
C102-03-0745-020	M20x30	2,3	40	74,5	42	58	16	52,5	18	12	0,600
C102-03-090-024	M24x36	3,2	49	90	50	69	20,5	61	22	12	1,000
C102-03-111-030	M30x45	4,5	60	111	66	86	25,5	75	28	17	2,000
C102-03-135-036	M36x55	7	74	135	77	105	32	96,5	30	22	3,400

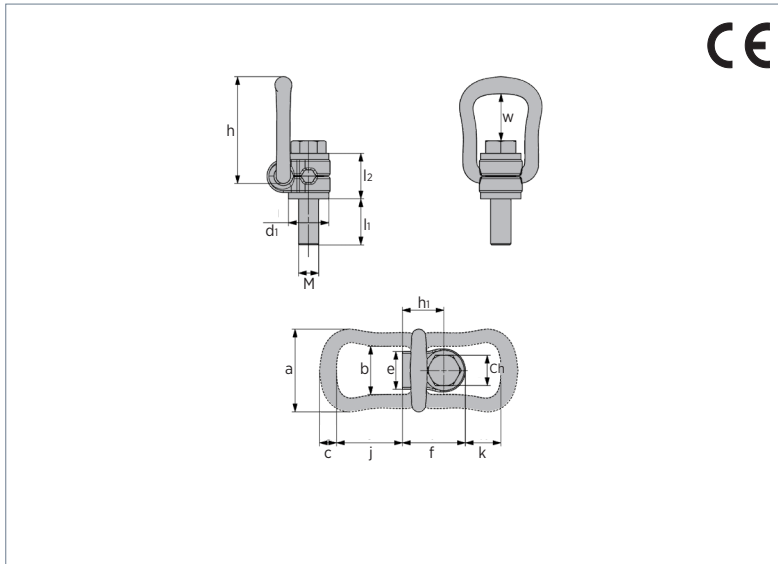
Mxh	0° Single Leg	0° 2 Legs	90° Single Leg	90° 2 Legs	0° - 45° 2 Legs	45° - 60° 2 Legs	Asymm 2 Legs	0° - 45° 3/4 Legs	45° - 60° 3/4 Legs	Asymm 3/4 Legs	Max. Tightening Couple (Nm)
M8x12	1	2	0,3	0,6	0,42	0,3	0,3	0,63	0,45	0,3	8
M10x15	1	2	0,4	0,8	0,56	0,4	0,4	0,84	0,6	0,4	16
M12x18	2	4	0,75	1,5	1	0,75	0,75	1,6	1,12	0,75	25
M16x24	4	8	1,5	3	2	1,5	1,5	3,15	2,25	1,5	60
M20x30	6	12	2,3	4,6	3,22	2,3	2,3	4,83	3,45	2,3	110
M24x36	8	16	3,2	6,4	4,48	3,2	3,2	6,7	4,8	3,2	195
M30x45	12	24	4,5	9	6,3	4,5	4,5	9,4	6,7	4,5	320
M36x55	16	32	7	14	9,8	7	7	14,7	10,5	7	585

1

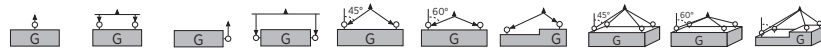


C102-04

Klempli Döner Taşıma Mapaları
Rotating Eyebolts with Clamp
Lastbock



CODE	Mxh	Working Load Limit W.L.L (t)	d1	h	h1	h2	l2	a	b	c	e	f	w	j	k	Ch	Weight (kg)
C102-04-078-008	M8x15	0,3	25	78	26,5	15	30	57	34	10	24	41	43	51	35	13	0,275
C102-04-078-010	M10x15	0,63	25	78	26,5	15	30	57	34	10	24	41	42	51	35	17	0,290
C102-04-085-012	M12x23	1	32	85	33	23	36	66	38	13,5	30	50	40	52	28	19	0,500
C102-04-085-016	M16x24	1,5	32	85	33	24	36	66	38	13,5	30	50	38	52	28	24	0,510
C102-04-111-020	M20x31	2,5	45	111	42,5	31	44	87	55	16	48	68	54	71	36	30	1,250
C102-04-111-024	M24x37	4	45	111	42,5	37	44	87	55	16	48	68	51	71	36	36	1,300
C102-04-145-030	M30x45	5	60	145	58,5	45	65	109	66	22,5	54	91	62	86	47	46	3,250
C102-04-190-036	M36x59	8	70	190	72,5	59	81	136	78	28	62	108	88	115	74	55	5,900



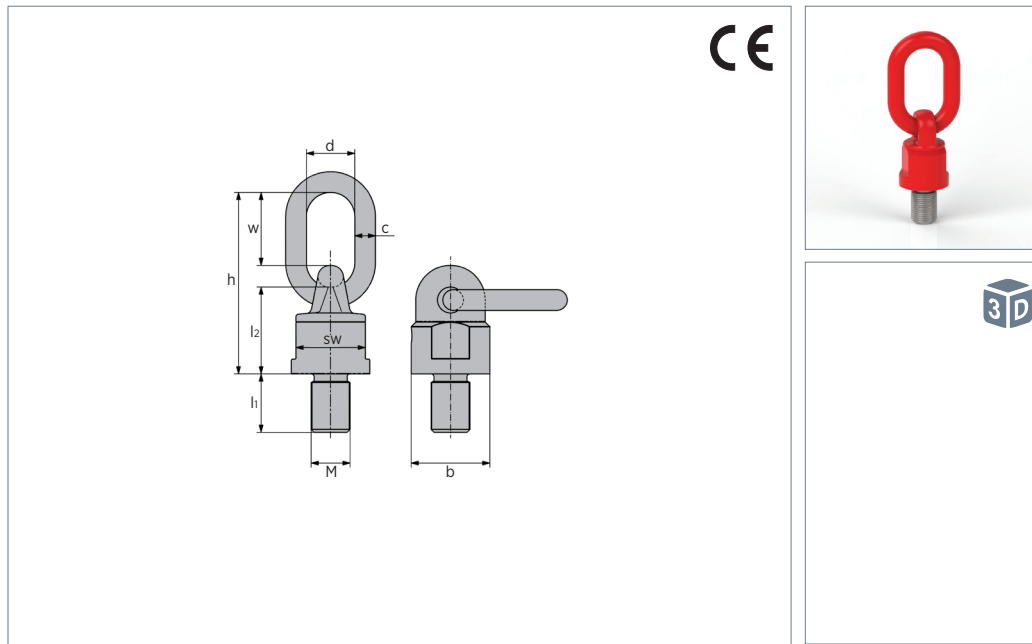
Mxh	0° Single Leg	0° 2 Legs	90° Single Leg	90° 2 Legs	0° - 45° 2 Legs	45° - 60° 2 Legs	Asymm 2 Legs	0° - 45° 3/4 Legs	45° - 60° 3/4 Legs	Asymm 3/4 Legs	Max. Tightening Couple (Nm)
M8x15	0,3	0,6	0,3	0,6	0,42	0,3	0,3	0,63	0,45	0,3	30
M10x15	0,63	1,26	0,63	1,26	0,88	0,63	0,63	1,32	0,95	0,63	60
M12x23	1	2	1	2	1,4	1	1	2,1	1,5	1	100
M16x24	1,5	3	1,5	3	2,1	1,5	1,5	3,15	2,25	1,5	150
M20x31	2,5	5	2,5	5	3,5	2,5	2,5	5,25	3,75	2,5	250
M24x37	4	8	4	8	5,6	4	4	8,4	6	4	400
M30x45	5	10	5	10	7	5	5	10,5	7,5	5	500
M36x59	8	16	8	16	11,2	8	8	16,8	12	8	800



C102-05

Halkalı Döner Taşıma Mapaları
Rotating Eyebolts with Ring
Wirbelbock

1



CODE	Mxh	Working Load Limit W.L.L (t)	d	h	l ₂	b	c	w	sw	Weight (kg)
C102-05-105-0816	M8x16	0,3	30	105	50	38	13	46	30	0,480
C102-05-105-1018	M10x18	0,3	30	105	50	38	13	46	30	0,480
C102-05-105-1218	M12x18	0,5	30	105	50	38	13	46	30	0,500
C102-05-105-1620	M16x20	1,12	30	105	50	38	13	46	30	0,530
C102-05-105-2030	M20x30	1,12	30	105	50	38	13	46	30	0,530
C102-05-153-2430	M24x30	3,15	40	153	68	58	18	70	48	1,630
C102-05-205-3035	M30x35	8	50	205	95	85	23	95	75	5,300

Mxh	0°		90°		0° - 45°			45° - 60°			Max. Tightening Couple (Nm)
	Single Leg	2 Legs	Single Leg	2 Legs	2 Legs	Asymm	2 Legs	Asymm			
M8x16	0,6	1,2	0,3	0,6	0,42	0,3	0,3	0,63	0,45	0,3	16
M10x18	0,6	1,2	0,3	0,6	0,42	0,3	0,3	0,63	0,45	0,3	16
M12x18	1	2	0,5	1	0,75	0,5	0,5	1,1	0,75	0,5	28
M16x20	2	4	1,12	2	1,5	1,12	1,12	2,36	1,6	1,12	70
M20x30	2	4	1,12	2	1,5	1,12	1,12	2,36	1,6	1,12	135
M24x30	6,3	12,5	3,15	6,3	4,25	3,15	3,15	6,3	4,75	3,15	230
M30x35	12,5	25	8	16	11,2	8	8	16,8	12	8	465

