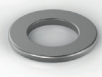



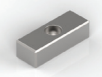



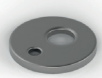

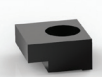







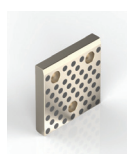
## MERCEDES-BENZ

 <p><b>B8 0110 100 008 806</b> Rondela Washer Unterlegscheibe</p>	 <p><b>B8 0301 231 108 801</b> Taşıma Milleri için Burçlar Bush for Lifting Pins Buchse für Tragbolzen</p>
 <p><b>B8 0111 131 008 812</b> Kama Key Passfeder</p>	 <p><b>B8 0441 123 408 802</b> Faturalı Grafitli Kılavuz Burçlar Guide Bushes with Collar, Self-lubricating Führungsbuchsen mit Festschmierstoff DIN 9834</p>
 <p><b>B8 0111 131 008 812</b> Kama Key Passfeder</p>	 <p><b>B8 0450 200 009 001</b> Kılavuz Kolonlar Guide Posts Führungssäulen</p>
 <p><b>B8 0111 131 008 814</b> Boşluk Ayar Plakası Spacer Abstimmplatte</p>	 <p><b>B8 0450 200 009 001</b> Kılavuz Kolonlar Guide Posts Führungssäulen</p>
 <p><b>B8 0111 431 008 801</b> Sensör için Braketler Round Retainer for Proximity Sensor Halteplatten Rund für Näherungsschalter</p>	 <p><b>B8 0450 200 009 001</b> Kılavuz Kolonlar Guide Posts Führungssäulen</p>
 <p><b>B8 0161 121 008 802</b> Burç Tutucu Toe Clamp Haltestück</p>	 <p><b>B8 0450 200 009 001</b> Kılavuz Kolonlar Guide Posts Führungssäulen</p>
 <p><b>B8 0162 410 008 801</b> Taşıma Milleri için Tutucu Bracket for Lifting Pins Bügel für Tragbolzen</p>	 <p><b>B8 0460 219 008 801</b> Çelik Kılavuz Plakalar Wear Plates, Steel Gleitplatten, Stahl</p>

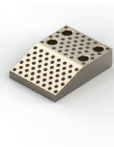
7



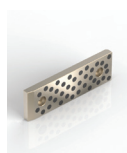
MERCEDES-BENZ



**B8 0460 231 009 002**  
Grafitli Bronz Kılavuz Plakalar  
Wear Plates, Self-lubricating  
Gleitplatten Bronze mit Festschmierstoff



**B8 0467 000 009 001**  
Kendinden Yağlı Kam Kılavuz Sürtünme Plakası  
Cam Dwell Wear Plate, Self-lubricating  
Überlaufkeile, Bronze mit Festschmierstoff



**B8 0460 231 008 801**  
Grafitli Bronz Kılavuz Plakalar  
Wear Plates, Self-lubricating  
Gleitplatten Bronze mit Festschmierstoff



**B8 0467 111 000 101**  
Konumlandırma Bloğu  
Locating Block  
Fangbacke



**B8 0460 231 009 003**  
Grafitli Bronz Kılavuz Plakalar  
Wear Plates, Self-lubricating  
Gleitplatten Bronze mit Festschmierstoff



**B8 0541 000 009 001**  
Mekanik Dayama  
Gage  
Einweiser



**B8 0460 850 000 101**  
Stoplama Bloğu  
Locating Block  
Fangbacke



**B8 0541 000 009 005**  
Mekanik Dayama  
Gage  
Einweiser



**B8 0461 110 000 101**  
V Blok, Çelik  
V Driver, Steel  
Prismenführung, Stahl



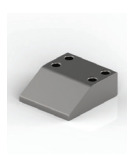
**B8 0541 000 009 005**  
Sertleştirilmiş Mekanik Dayama  
Gage, Hardened  
Einweiser Gehärtet



**B8 0461 131 000 101**  
Kendinden Yağlı V Blok  
V Driver, Self-lubricating  
Prismenführung Bronze mit Festschmierstoff



**B8 0541 000 009 007**  
Kontrol Parçalı Mekanik Dayama  
Gage for Sensor  
Einweiser für Teillagekontrolle



**B8 0467 000 009 001**  
Kam Kılavuz Sürtünme Plakası, Çelik  
Cam Dwell Wear Plate, Steel  
Überlaufkeile, Stahl



**B8 0541 000 009 008**  
Mekanik Dayama  
Gage  
Einweiser

7



## MERCEDES-BENZ



**B8 0550 100 008 801**

Stoplana Bloğu  
Spacer  
Distanzscheibe



**B8 0624 108 800 002**

Konik Merkezleme Ünitesi  
Locating Cone  
Zentriereinheit



**B8 0561 131 008 803**

Baskı Plakası  
Pressure Plate  
Druckplatte



**B8 1001 110 008 801**

Civata  
Spacer  
Abstimmsschraube



**B8 0561 131 008 804**

Ayar Plakaları  
Shim Plates  
Abstimmsscheiben



**B8 1013 110 008 802**

Tespit Civatası  
Retainer Bolt  
Schulter Passschraube



**B8 0602 104 008 803**

Merkezleme Pimi  
Locating Pin  
Zentrierbolzen



**B8 1087 100 000 001**

Kolon Segmanları  
Post Rings  
Sprengtring



**B8 0602 321 008 801**

Merkezleme Pimi  
Locating Pin  
Zentrierbolzen



**B8 1240 300 009 001**

Taşıma Braketleri  
Lifting Brackets  
Tragzapfen

VDI 3366



**B8 0604 100 001 102**

Elastomer Yaylar için Sabitleme Pimleri  
Pin for Elastomer Springs  
Aufnahmebolzen



**B8 2002 231 009 001**

Taşıma Milleri  
Lifting Pins  
Tragbolzen mit Fallringsicherung



**B8 0604 100 008 802**

Konik Merkezleme Ünitesi  
Locating Cone  
Zentriereinheit



**B8 2002 310 008 801**

Tespit Civatası  
Retainer Bolt  
Haltebolzen

7



## MERCEDES-BENZ



**B8 2002 521 008 801**

Pin  
Pin  
Ankerbolzen



**B8 2002 621 008 802**

Emniyet Pimleri  
Pad Retainer Pins  
Steckbolzen



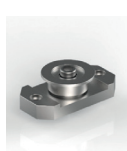
**B8 2002 731 000 002**

Hava Pimi  
Air Pin  
Druckbolzen



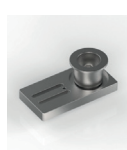
**B8 7007 000 008 808**

Makaralı Sürücü Üniteler  
Coil Guide Rollers  
Führungsrollen



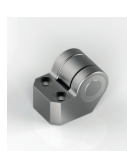
**B8 7007 000 008 809**

Makaralı Sürücü Üniteler  
Coil Guide Rollers  
Führungsrollen



**B8 7007 000 008 810**

Makaralı Sürücü Üniteler  
Coil Guide Rollers  
Führungsrollen



**B8 7466 100 009 001**

Kam Sürücü  
Cam Roller  
Rollenbock

7