



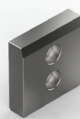
PSA GROUP

 <p>E24.51.930.G Dengeleme Bloğu Balance Block Distanzstück</p>	 <p>E24.52.105.G Burç Tutucu Toe Clamp Haltestück</p>
 <p>E24.51.930.G Stoplama Bloğu Stop Block Abstandsblock</p>	 <p>E24.52.105.G Faturalı Grafitli Kılavuz Burçlar Guide Bushes with Collar, Self-lubricating Führungsbuchsen mit Festschmierstoff</p>
 <p>E24.52.105.G Kılavuz Kolonlar Guide Posts Führungssäulen</p>	 <p>E24.52.105.G Burç Tutucu Toe Clamp Haltestück</p>
 <p>E24.52.105.G Kolon Tutucu Flanşlar Flange for Median Retaining Column Haltestück für Führungssäulen AFNOR</p>	 <p>E24.52.305.G Burç Tutucu Toe Clamp Haltestück</p>
 <p>E24.52.105.G Kolon Tutucu Flanşlar Flange for Median Retaining Bushes Haltestück für Führungssäulen AFNOR</p>	 <p>E24.52.504.G Yağlama Kanallı Çelik Kılavuz Plakalar Wear Plates with Oil Groove Gleitplatten, Stahl mit Ölschmierhut AFNOR</p>
 <p>E24.52.105.G Faturalı Kılavuz Burçlar Guide Bushes with Collar, Self-lubricating Führungsbuchsen mit Bund</p>	 <p>E24.52.504.G Grafitli Bronz Kılavuz Plakalar Wear Plates, Self-lubricating Gleitplatten Bronze mit Festschmierstoff AFNOR</p>
 <p>E24.52.105.G Kılavuz Kolonlar Guide Posts Führungssäulen</p>	 <p>E24.52.504.G Grafitli Bronz Kılavuz Plakalar Wear Plates, Self-lubricating Gleitplatten Bronze mit Festschmierstoff VDI 3357</p>

9



PSA GROUP



E24.52.504.G

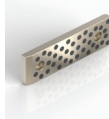
Celik Kılavuz Plakalar
Wear Plates, Steel
Gleitplatten, Stahl

VDI 3357



E24.52.512.G

Yağlama Kanallı Çelik Kılavuz Plakalar
Wear Plates with Oil Groove
Gleitplatten, Stahl mit Ölschmiernut



E24.52.504.G

Grafitli Bronz Kılavuz Plakalar
Wear Plates, Self-lubricating
Gleitplatten Bronze mit Festschmierstoff

VDI 3357



E24.52.512.G

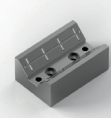
Celik Kılavuz V Plakalar
V Driver, Steel
Prismenführung aus Stahl



E24.52.504.G

Celik Kılavuz Plakalar
Wear Plates, Steel
Gleitplatten, Stahl

VDI 3357



E24.52.512.G

Yağlama Kanallı Çelik Kılavuz Plakalar
Angular Slide Plates, Steel and Oil Groove
Prismenführung, Stahl mit Ölschmiernut



E24.52.512.G

Yağlama Kanallı Çelik Kılavuz Plakalar
Wear Plates with Oil Groove
Gleitplatten, Stahl mit Ölschmiernut



E24.52.512.G

Yağlama Kanallı Çelik Kılavuz Plakalar
Angular Slide Plates, Steel and Oil Groove
Prismenführung, Stahl mit Ölschmiernut



E24.52.512.G

Yağlama Kanallı Çelik Kılavuz Plakalar
Wear Plates with Oil Groove
Gleitplatten, Stahl mit Ölschmiernut



E24.52.512.G

Celik Kılavuz Plakalar
Wear Plates, Steel
Gleitplatten, Stahl



E24.52.512.G

Yağlama Kanallı Çelik Kılavuz Plakalar
Wear Plates with Oil Groove
Gleitplatten, Stahl mit Ölschmiernut



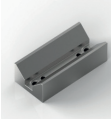
E24.52.535.G

Bronz Grafitli V Blokklar
V Driver, Self-lubricating
Prismenführungen Bronze mit Festschmierstoff



E24.52.512.G

Yağlama Kanallı Çelik Kılavuz Plakalar
Wear Plates with Oil Groove
Gleitplatten, Stahl mit Ölschmiernut





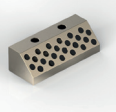











E24.52.535.G

V Blokklar, Çelik
V Driver, Steel
Prismenführung aus Stahl

9



PSA GROUP

 <p>E24.52.535.G Celik Kılavuz Plakalar Angular Slide Plates, Steel Prismenführung aus Stahl</p>	 <p>E24.54.420.G Elastomer Tıpa Elastomer Cap Elastomerdruckstück</p>
 <p>E24.52.535.G Grafitli Bronz Kılavuz Plakalar Angular Slide Plates, Self-lubricating Prismenführung, Bronze mit Festschmierstoff</p>	 <p>E24.54.445.G Elastomer Yaylar Elastomer Springs Elastomerfeder</p>
 <p>E24.52.535.G Grafitli Bronz Kılavuz Plakalar Wear Plates, Self-lubricating Gleitplatten Bronze mit Festschmierstoff</p>	 <p>E24.54.445.G Elastomer Sıyıcılar Elastomer Stripper for Blanking Dies Abstreifer für Platinenschnitte</p>
 <p>E24.52.540.G Celik Aitlık Plakaları Distance Plates, Steel Höhenausgleich für Gleitplatten</p>	 <p>E24.55.265.G Emniyet Pimleri için Amortisör Vulkolonlar Shock Absorber for Pad Retainer Pins Halteelemente</p>
 <p>E24.53.920.G Zimba Sıyıcılar Punch Stripper Präzisions Scraper</p>	 <p>E24.55.265.G Emniyet Pimleri Pad Retainer Pins Steckbolzen</p>
 <p>E24.54.410.G Poliüretan Yaylar Elastomer Springs Elastomerfeder</p>	 <p>E24.55.410.G Stoplama Civataları Spring Spacer Units Retainer Bolts</p>
 <p>E24.54.410.G Elastomer Yaylar için Sabitleme Pimleri Pin for Elastomer Springs Aufnahmebolzen</p>	 <p>E24.56.200.G Sertleştirilmiş Mekanik Dayama Gage Hardened Einweiser Gehärtet</p>

9



PSA GROUP



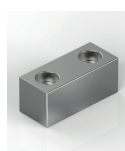
E24.56.200.G

Sensörli Mekanik Dayama
Gage for Sensor
Einweiser für Teillagekontrolle



E24.57.900.G

Braket
Bracket
Halterung



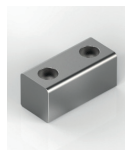
E24.56.630.G

Kama
Key
Passfedern



E24.64.100.G

Zimba Tutucu
Stamp Retainer
Halteplatte



E24.56.630.G

Kama
Key
Passfedern



E24.64.100.G

Zimba Destek Plakası
Backing Plate
Druckplatte



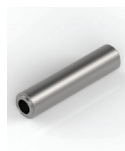
E24.56.700.G

Konik Merkezleme Üniteleri
Locating Cone
Kegeldistanz



E24.64.100.G

Zimba
Stamp
Buchstabenstempel



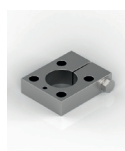
E24.57.370.G

Biyalı Yatak
Sleeve
Führungseinheit



E24.64.100.G

Zimba
Stamp
Buchstabenstempel



E24.57.370.G

Sabitleme Kelepçeleri
Coupling Clamps
Befestigungselement



E24.64.105.G

Konum İz Zimbası
Visual Locator Punch
Endkontrolstempel



E24.57.370.G

Kılavuz Pim
Guide Post
Führungssäule



E24.65.000.G

Taşıma Milleri
Lifting Pins
Tragbolzen mit Fallringsicherung

9