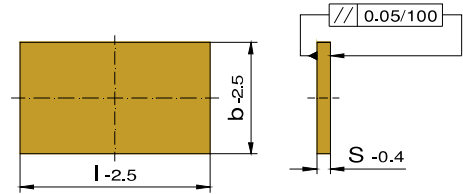
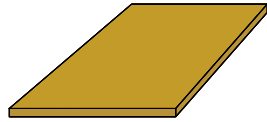


INSULATING PLATES PŁYTY IZOLACYJNE



N 50

Insulating Board $P = 600 \text{ N/mm}^2$



Ordering-Example:

1 Piece N50 95/95/3

Special Sizes Available On Request

Application Temperature: 200°C
Thermal Conductivity: $0,19 \text{ W/mk}$

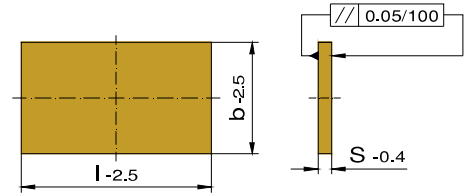
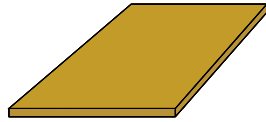
Dense: $1,9 \text{ g/cm}^3$

b	l	S	D	€	
95	95	3	-		
100	130				
156	156				
	196				
	246				
190	246				
196	196				
	246				
206	156				
	196				
95	95	5			
100	130				
156	156				
	196				
	246				
	296				
190	246				
	296				
	396				
196	196				
	246				
	296				
	346				
206	156				
	196				
218	246				
	296				
246	246				
	296				
	346				
	396				
254	246				
276	246				
126	156	6			
	246				
156	156				
	196				
	206				
	246				
	296				
	346				
	396				
	446				

b	l	S	D	€
196	196	6	-	
	206			
	246			
	296			
	346			
	396			
	446			
	496			
216	246			
	296			
	396			
246	246			
	266			
	296			
	346			
	396			
	446			
	496			
	546			
266	296			
196	296	7		
	346			
	396			
	446			
218	396			
246	246			
	296			
	346			
	396			
	446			
254	246			
276	296			
296	296			
	346			
	396			
	446			
	496			
	546			
346	346			
	396			
	446			
	496			
	546			

N 50

Insulating Board $P = 600 \text{ N/mm}^2$



Ordering-Example:

1 Piece N50 396/396/7

Special Sizes Available On Request

Application Temperature: 200°C
Thermal Conductivity: $0,19 \text{ W/mk}$

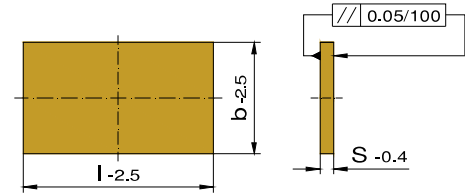
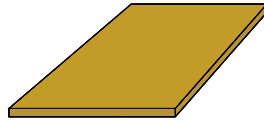
Dense: $1,9 \text{ g/cm}^3$

b	l	S	D	€	
396	396	7	-		
	446				
	496				
	546				
496	546				
296	296	8			
	346				
	396				
	446				
	496				
	546				
	596				
	646				
	696				
346	346				
	396				
	446				
	496				
	546				
	596				
	646				
	696				
	796				
396	396				
	446				
	496				
	546				
	596				
	646				
	696				
	796				
446	446				
	496				
	546				
	596				
	646				
	696				
	796				
496	496				
	546				
	596				
	646				
	696				

b	l	S	D	€	
496	796	8	-		
546	546				
	596				
	646				
	696				
	796				
596	596				
	646				
	696				
	796				
	896				
	996				
646	646				
	696				
	796				
	896				
	996				
746	796				
	896				
	996				
796	796				
	846				
	896				
	996				
846	896				
	996				

N 50

Insulating Board $P = 600 \text{ N/mm}^2$



Ordering-Example:

1 Piece N50 246/496/8,5

Special Sizes Available On Request

Application Temperature: 200°C
Thermal Conductivity: $0,19 \text{ W/mk}$

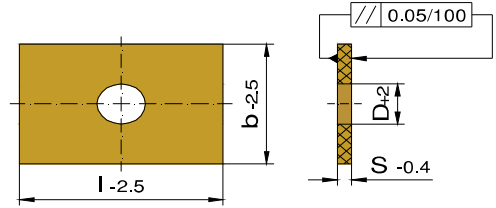
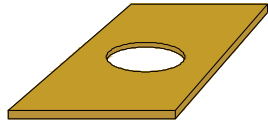
Dense: $1,9 \text{ g/cm}^3$

b	l	S	D	€
246	496	8,5	-	
296	296			
	346			
	396			
	446			
	496			
	546			
	596			
	696			
346	346			
	396			
	446			
	496			
	546			
	596			
	696			
	796			
396	396			
	446			
	496			
	546			
	596			
	696			
	796			
	896			
446	446			
	496			
	546			
	596			
	696			
	796			
	896			
496	496			
	546			
	596			
	696			
	796			
	896			
	996			

b	l	S	D	€
546	546	8,5	-	
	596			
	646			
	696			
	796			
	896			
596	596			
	696			
	796			
	996			
646	596			
	696			
	796			
	996			
696	696			
	796			
	896			
	996			
796	796			
	896			
	996			
896	896			
	996			

N 51

Insulating Board $P = 600 \text{ N/mm}^2$



Ordering-Example:

1 Piece N51 95/95/3/22

Special Sizes Available On Request

Application Temperature: 200°C
Thermal Conductivity: $0,19 \text{ W/mk}$

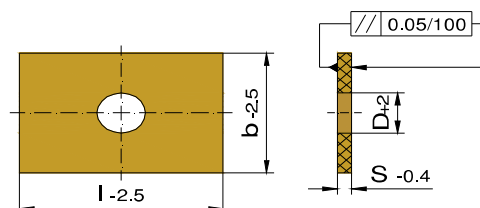
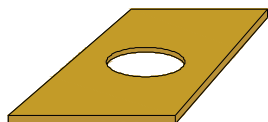
Dense: $1,9 \text{ g/cm}^3$

b	l	S	D	€
95	95	3	22	
100	130		22	
156	156		90	
	196		90	
	246		90	
190	246		90	
196	196		90	
	246		90	
206	156		90	
	196		90	
95	95	5	22	
100	130		22	
156	156		90	
	196		90	
	246		90	
	296		90	
	396		90	
190	246		90	
	296		90	
196	196		90	
	246		90	
	296		90	
206	156		90	
	196		90	
	246		90	
218	246		90	
	296		90	
	346		90	
246	156		90	
	196		90	
	246		90	
	296		90	
254	246		90	
276	246		90	

b	l	S	D	€	
126	156	6	90		
156	246		90		
	156		90		
	196		90		
	206		90		
	246		90		
196	296		90		
	346		90		
	396		90		
	446		90		
	496		90		
	216		246	90	
	246		296	90	
396			90		
246			90		
266			90		
296		90			
266	246	90			
	266	90			
	296	90			
	346	90			
	396	90			

N 51

Insulating Board $P = 600 \text{ N/mm}^2$



Ordering-Example:

1 Piece N51 196/296/7/90

Special Sizes Available On Request

Application Temperature: 200°C
Thermal Conductivity: $0,19 \text{ W/mk}$

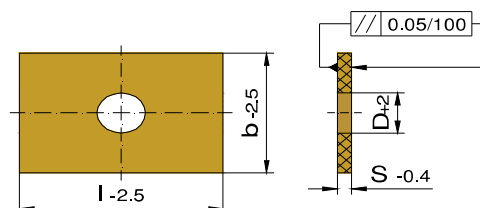
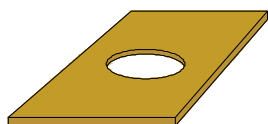
Dense: $1,9 \text{ g/cm}^3$

b	l	S	D	€
196	296	7	90	
	346		90	
	396		90	
	446		90	
218	396		90	
246	246		90	
	296		90	
	346		90	
	396		90	
	446		90	
254	246		90	
276	296		90	
296	296		90	
	346		90	
	396	90		
	446	90		
346	346	90		
	396	90		
	446	90		
	496	90		
	546	90		
396	396	90		
	446	90		
	496	90		
	546	90		
496	546	90		
	596	90		
296	296	8	90	
	346		90	
	396		90	
	446		90	
	496		90	
	546		90	
	596		90	
	646		90	
	696		90	

b	l	S	D	€
346	346	8	90	
	396		90	
	446		90	
	496		90	
	546		90	
	596		90	
	646		90	
	696		90	
	796		90	
396	396	90		
	446	90		
	496	90		
	546	90		
	596	90		
	646	90		
	696	90		
446	446	90		
	496	90		
	546	90		
	596	90		
	646	90		
	696	90		
	796	90		
496	496	90		
	546	90		
	596	90		
	646	90		
	696	90		
	796	90		
546	546	90		
	596	90		
	646	90		
	696	90		
	796	90		
596	596	90		
	646	90		
	696	90		
	796	90		
646	646	90		
	696	90		
	796	90		

N 51

Insulating Board $P = 600 \text{ N/mm}^2$



Ordering-Example:

1 Piece N51 246/496/8,5/90

Special Sizes Available On Request

Application Temperature: 200°C
Thermal Conductivity: $0,19 \text{ W/mk}$

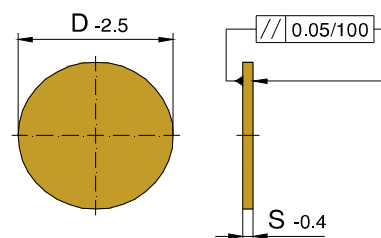
Dense: $1,9 \text{ g/cm}^3$

b	l	S	D	€
246	496	8,5	90	
296	296		90	
	346		90	
	396		90	
	446		90	
	496		90	
	546		90	
	596		90	
	696		90	
346	346		90	
	396		90	
	446		90	
	496		90	
	546		90	
	596		90	
	696		90	
	796		90	
396	396		90	
	446		90	
	496		90	
	546		90	
	596		90	
	696		90	
	796		90	
	896		90	
446	446		90	
	496		90	
	546		90	
	596		90	
	696		90	
	796		90	
	896		90	
496	496		90	
	546		90	
	596		90	
	696		90	
	796		90	
	896		90	
	996		90	

b	l	S	D	€
546	546	8,5	90	
	596		90	
	646		90	
	696		90	
	796		90	
	896		90	
	996		90	
596	596		90	
	696		90	
	796		90	
	896		90	
646	596		90	
	696		90	
	796		90	
	896		90	
	996		90	
696	696		90	
	796		90	
	896		90	
	996		90	
796	796		90	
	896		90	
	996		90	
896	896		90	
			90	
			90	

N 54

Insulating Board $P = 600 \text{ N/mm}^2$



Ordering-Example:

1 Piece N54 95/3

Special Sizes Available On Request

Application Temperature: 200°C

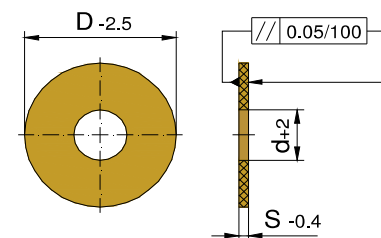
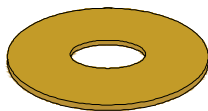
Thermal Conductivity: $0,19 \text{ W/mk}$

Dense: $1,9 \text{ g/cm}^3$

S	D	€
3	95	
	116	
	156	
5	156	
	196	
	246	
	296	
7	344	

N 55

Insulating Board $P = 600 \text{ N/mm}^2$



Ordering-Example:

1 Piece N55 95/3/22

Special Sizes Available On Request

Application Temperature: 200°C

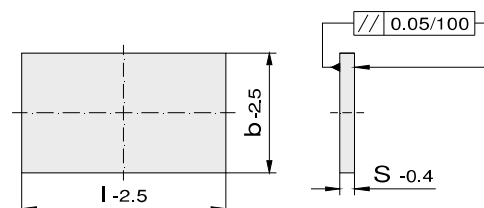
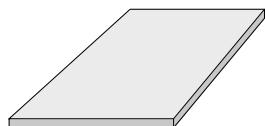
Thermal Conductivity: $0,19 \text{ W/mk}$

Dense: $1,9 \text{ g/cm}^3$

S	d	D	€
3	22	95	
	90	156	
5	90	156	
		196	
		246	
		296	
7	90	344	

N 52

Insulating Board $P = 330 \text{ N/mm}^2$



Ordering-Example:

1 Piece N52 95/95/3

Special Sizes Available On Request

Application Temperature: 200°C

Thermal Conductivity: $0,18 \text{ W/mk}$

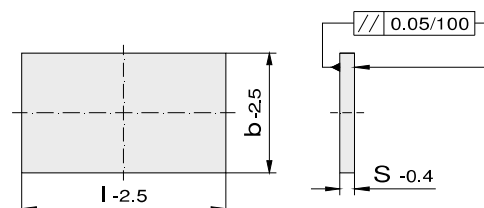
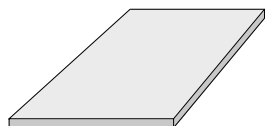
Dense: $1,8 \text{ g/cm}^3$

b	l	S	D	€
95	95	3	-	
100	130			
156	156			
	196			
	246			
	296			
	396			
190	246			
	296			
196	196			
	246			
	296			
	346			
206	156			
	196			
218	246			
	296			
246	246			
	296			
254	246			
276	246			
296	296			
	296			
95	95	5		
100	130			
156	156			
	196			
	246			
	296			
	396			
190	246			
	296			
196	196			
	246			
	296			
	346			
	396			
	446			
206	156			
	196			
218	246			
	296			
	396			

b	l	S	D	€
246	246	5	-	
	296			
	346			
	396			
	446			
	496			
254	246			
276	246			
296	296			
	346			
	396			
	446			
	496			
	546			
346	596			
	346			
	396			
	446			
396	496			
	546			
	396			
	446			
296	496			
	296			
	296			
126	156	6		
156	246			
	156			
	196			
	206			
	246			
	296			
	346			
	396			
	446			
	496			
196	196			
	206			
	246			
	296			
	346			
	396			
216	446			
	496			
	246			
	296			

N 52

Insulating Board $P = 330 \text{ N/mm}^2$



Ordering-Example:

1 Piece N52 216/396/6

Special Sizes Available On Request

Application Temperature: 200°C

Thermal Conductivity: $0,18 \text{ W/mk}$

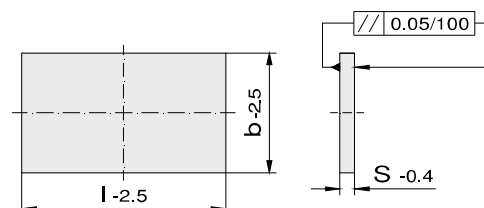
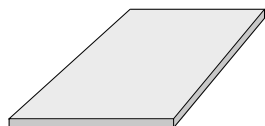
Dense: $1,8 \text{ g/cm}^3$

b	l	S	D	€
216	396	6	-	
246	246			
	266			
	296			
	346			
	396			
	446			
	496			
	546			
	596			
266	296	7		
196	296			
	346			
	396			
218	446			
	396			
	446			
246	246			
	296			
	346			
	396			
	446			
254	246	8		
276	296			
296	296			
	346			
	396			
	446			
346	346			
	396			
	446			
	496			
	546			
396	396			
	446			
	496			
	546			
496	546			
296	296			
	346			
	396			
	446			
	496			
546				

b	l	S	D	€
296	596	8	-	
	646			
	696			
	746			
346	346			
	396			
	446			
	496			
	546			
	596			
	646			
396	696			
	796			
	396			
	446			
	496			
446	546			
	596			
	646			
	696			
	796			
	446			
	496			
496	546			
	596			
	646			
	696			
	796			
546	546			
	596			
	646			
	696			
	796			
596	596			
	646			
	696			
	796			
	896			

N 52

Insulating Board $P = 330 \text{ N/mm}^2$



Ordering-Example:

1 Piece N52 596/996/8

Special Sizes Available On Request

Application Temperature: 200°C

Thermal Conductivity: $0,18 \text{ W/mk}$

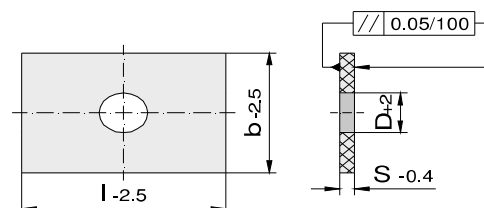
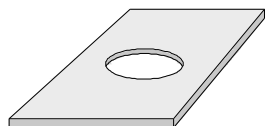
Dense: $1,8 \text{ g/cm}^3$

b	l	S	D	€
596	996	8	-	
646	646			
	696			
	796			
	896			
	996			
696	696			
	746			
	796			
	896			
	996			
746	796			
	896			
	996			
796	796			
	846			
	896			
	996			
846	896			
	996			
246	496	8,5		
296	296			
	346			
	396			
	446			
	496			
	546			
	596			
696				
346	346			
	396			
	446			
	496			
	546			
	596			
	696			
796				
396	396			
	446			
	496			
	546			
	596			
	696			

b	l	S	D	€			
396	796	8,5	-				
446	896						
	446						
	496						
	546						
496	596						
	696						
	796						
	896						
	496						
546	546						
	596						
	696						
	796						
	896						
	996						
	546						
596	596						
	696						
	796						
	896						
	996						
646	596						
	696						
	796						
	896						
696	996						
	696						
	796						
	896						
796	996						
	796						
	896						
896	896						
	996						
	996						

N 53

Insulating Board $P = 330 \text{ N/mm}^2$



Ordering-Example:

1 Piece N53 95/95/3/22

Special Sizes Available On Request

Application Temperature: 200°C
Thermal Conductivity: $0,18 \text{ W/mk}$

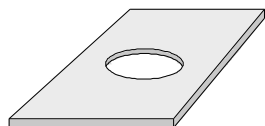
Dense: $1,8 \text{ g/cm}^3$

b	l	S	D	€
95	95	3	22	
100	130		22	
156	156		90	
	196		90	
	246		90	
	296		90	
190	396		90	
	246		90	
	296		90	
196	246		90	
	296		90	
	346		90	
206	156		90	
	196		90	
218	246		90	
	296		90	
246	246		90	
	296		90	
254	246		90	
276	246		90	
	296	90		
296	296	90		
95	95	5	22	
100	130		22	
156	156		90	
	196		90	
	246		90	
	296		90	
190	396		90	
	246		90	
	296		90	
196	246		90	
	296		90	
	346		90	
	396		90	
	446		90	
	496		90	
206	156		90	
	196		90	

b	l	S	D	€	
218	246	5	90		
	296		90		
	396		90		
246	246		90		
	296		90		
	346		90		
	396		90		
	446		90		
190	496		90		
	254		246	90	
	276		246	90	
296	296		90		
	346		90		
	396		90		
	446		90		
	496	90			
	546	90			
346	596	90			
	346	90			
	396	90			
	446	90			
276	496	90			
	296	296	90		
	546	90			
396	396	90			
	446	90			
	496	90			
126	156	6	90		
156	246		90		
	156		90		
	196		90		
	206		90		
	246		90		
196	296		90		
	346		90		
	396		90		
	446		90		
	496	90			

N 53

Insulating Board $P = 330 \text{ N/mm}^2$



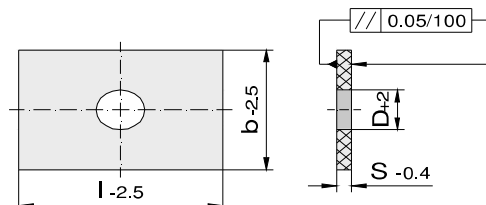
Ordering-Example:

1 Piece N53 196/196/6

Special Sizes Available On Request

Application Temperature: 200°C
Thermal Conductivity: $0,18 \text{ W/mk}$

Dense: $1,8 \text{ g/cm}^3$

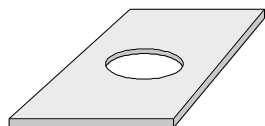


b	l	S	D	€
196	196	6	90	
	206		90	
	246		90	
	296		90	
	346		90	
	396		90	
	446		90	
	496		90	
216	246		90	
	296	90		
	396	90		
246	246	7	90	
	266		90	
	296		90	
	346		90	
	396		90	
	446		90	
	496		90	
	546		90	
	596		90	
266	296		90	
196	296		90	
	346		90	
	396		90	
	446		90	
218	396		90	
246	246	90		
	296	90		
	346	90		
	396	90		
	446	90		
254	246	90		
276	296	90		
296	296	90		
	346	90		
	396	90		
	446	90		
346	346	90		
	396	90		
	446	90		
	496	90		
	546	90		
396	396	90		

b	l	S	D	€
396	446	7	90	
	496		90	
	546		90	
496	546	8	90	
296	296		90	
	346		90	
	396		90	
	446		90	
	496		90	
	546		90	
	596		90	
	646		90	
	696		90	
346	346		90	
	396		90	
	446		90	
	496		90	
	546		90	
	596	90		
	646	90		
	696	90		
	796	90		
	396	396	90	
		446	90	
496		90		
546		90		
596		90		
646		90		
696		90		
796		90		
446		446	90	
	496	90		
	546	90		
	596	90		
	646	90		
	696	90		
	796	90		
	496	496	90	
		546	90	
596		90		
646		90		
696		90		
796		90		

N 53

Insulating Board $P = 330 \text{ N/mm}^2$



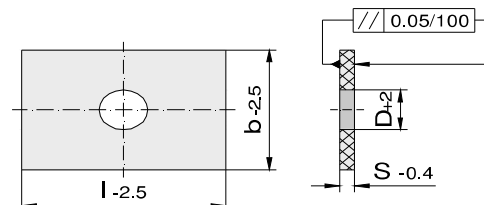
Ordering-Example:

1 Piece N53 546/546/8/90

Special Sizes Available On Request

Application Temperature: 200°C
Thermal Conductivity: $0,18 \text{ W/mk}$

Dense: $1,8 \text{ g/cm}^3$



b	l	S	D	€	
546	546	8	90		
	596		90		
	646		90		
	696		90		
	796		90		
596	596	8,5	90		
	646		90		
	696		90		
	796		90		
646	646		90		
	696		90		
	796		90		
246	496		8,5	90	
296	296			90	
	346			90	
	396			90	
	446			90	
	496			90	
	546			90	
	596			90	
696	90				
346	346	90			
	396	90			
	446	90			
	496	90			
	546	90			
	596	90			
396	696	90			
	796	90			
	896	90			

b	l	S	D	€
446	446	8,5	90	
	496		90	
	546		90	
	596		90	
	696		90	
	796		90	
	896		90	
496	496		90	
	546		90	
	596		90	
	696		90	
	796		90	
	896		90	
	996		90	
546	546		90	
	596	90		
	646	90		
	696	90		
	796	90		
	896	90		
	996	90		
596	596	90		
	696	90		
	796	90		
	896	90		
	996	90		
646	596	90		
	696	90		
	796	90		
	896	90		
	996	90		
696	696	90		
	796	90		
	896	90		
	996	90		
796	796	90		
	896	90		
	996	90		
896	896	90		
	996	90		

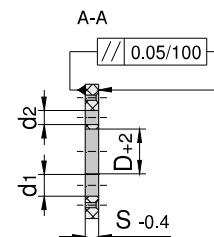
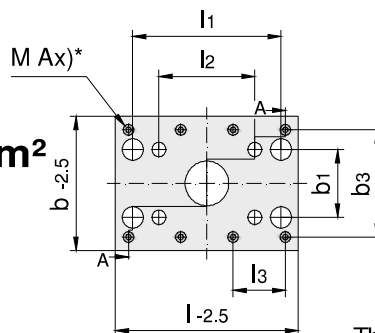
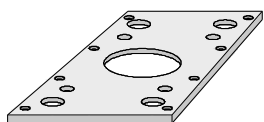
N 56

Insulating Board $P = 330 \text{ N/mm}^2$

Ordering-Example:

1 Piece 56096096001

Ax)* Number Of Screw Holes



Application Temperature: 200°C
Thermal Conductivity: $0,18 \text{ W/mk}$

Dense: $1,8 \text{ g/cm}^3$

Special Sizes Available On Request

d1	d2	b3	l3	Ax	M	D	s	b	l	b1	l2	l1	Part Number	1 pc. €	from 2 pcs. €
14	16	74	50	4	M3	60	6	96	96	74	24	74	56096096001		
			80					96	126		54	104	56096126001		
			134					96	156		24	74	56096156001		
								96	156		54	104	56096156002		
14	16	104	80	4	M3	60	6	126	126	104	54	104	56126126001		
			134					126	156				56126156001		
20	19	94	92		M4	90		126	156	94	60	124	56126156002		
			214					126	246				56126246001		
14	16	134	74	4	M3	60	6	156	96	74	24	74	56156096001		
			104					156	126		54	104	56156126001		
								156	126	104			56156126002		
			134					156	156	74	24	74	56156156001		
								156	156		54	104	56156156002		
								156	156	104			56156156003		
20	19	124	124		M4	90		156	156	94	60	124	56156156004		
			92					156	156	124			56156156005		
			164					156	196				56156196001		
			132					156	196		100	164	56156196002		
			214					156	246		60	124	56156246001		
			182					156	246		150	214	56156246002		
			132	6				156	296		100	164	56156296001		
								156	296		150	214	56156296002		
			116					156	296		200	264	56156296003		
			141					156	346		250	314	56156346001		
			182					156	396		200	264	56156396001		
			207					156	446		250	314	56156446001		
20	19	164	92	4	M4	90	6	196	156	164	60	124	56196156001		
			164					196	196				56196196001		
26		156	118					196	196	156	86	156	56196196002		
20		164	214					196	246	124	150	214	56196246001		
								196	246	164	60	124	56196246002		
26								196	246	156	86	156	56196246003		
		156	168					196	246		136	206	56196246004		
20		164	132	6				196	296	124	200	264	56196296001		
26								196	296	156	86	156	56196296002		
								196	296		136	206	56196296003		
		156	109					196	296		186	256	56196296004		
20		164	157					196	346	124	250	314	56196346001		

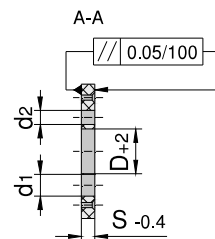
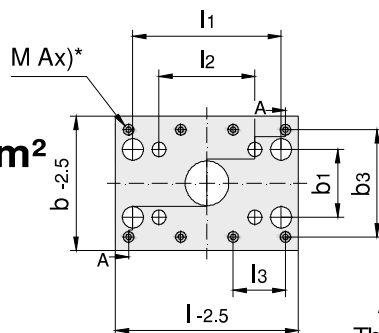
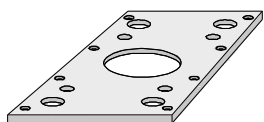
N 56

Insulating Board $P = 330 \text{ N/mm}^2$

Ordering-Example:

1 Piece 56196346002

Ax)* Number Of Screw Holes



Application Temperature: 200°C
Thermal Conductivity: $0,18 \text{ W/mk}$

Dense: $1,8 \text{ g/cm}^3$

Special Sizes Available On Request

d1	d2	b3	l3	Ax	M	D	s	b	l	b1	l2	l1	Part Number	1 pc. €	from 2 pcs. €	
30	21	178	164	6	M4	90	6	196	346	148	220	298	56196346002			
26	19	164	182					196	396	156	186	256	56196396001			
30	21	178	189					196	396	148	270	348	56196396002			
		164	207					196	446		220	298	56196446001			
		178	214					196	446		270	348	56196446002			
		159	8					196	496		370	448	56196496001			
20	19	174	124	4	M4	90	6	206	156	124	60	124	56206156001			
		164						206	196				56206196001			
								206	196		100	164	56206196002			
26	19	176	168	4	M4	90	6	216	246	176	136	260	56216246001			
		184	132	6				216	296			206	56216296001			
		176	109					216	296		186	256	56216296002			
		184	182					216	396				56216396001			
20	19	214	124	4	M4	90	6	246	156	164	60	124	56246156001			
		164						246	196				56246196001			
26								246	196	156	86	156	56246196002			
		206	118					246	196	206			56246196003			
		214	214					246	246	156			56246246001			
								246	246		136	206	56246246002			
								246	246	206	86	156	56246246003			
		206	168					246	246		136	206	56246246004			
		214	132	6				246	296	156	186	256	56246296001			
							246	296	206	86	156	56246296002				
							246	296		136	206	56246296003				
							246	296				56246296004				
30	21	228	139					246	296	198	170	248	56246296005			
		214	157					246	346	148	220	298	56246346001			
26	19							246	346	206	136	206	56246346002			
30	21	228	164					246	346	198	220	298	56246346003			
		214	182					246	396	148	270	348	56246396001			
								246	396	198	170	248	56246396002			
		228	189					246	396		270	348	56246396003			
		214	207					246	446	148	320	398	56246446001			
								246	446	198	220	298	56246446002			
								246	446		270	348	56246446003			
		228	214					246	446		320	398	56246446004			

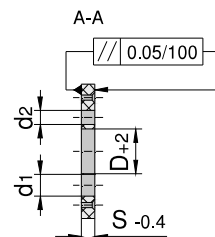
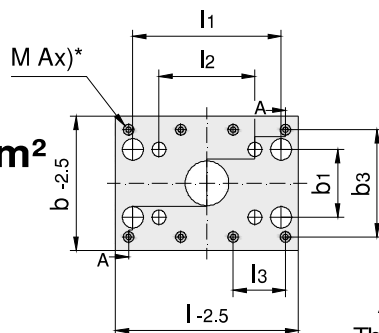
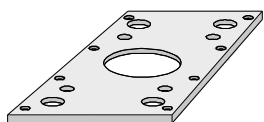
N 56

Insulating Board $P = 330 \text{ N/mm}^2$

Ordering-Example:

1 Piece 56246496001

Ax)* Number Of Screw Holes



Application Temperature: 200°C
Thermal Conductivity: $0,18 \text{ W/mk}$

Dense: $1,8 \text{ g/cm}^3$

Special Sizes Available On Request

d1	d2	b3	l3	Ax	M	D	s	b	l	b1	l2	l1	Part Number	1 pc. €	from 2 pcs. €
30	21	214	155	8	M4	90	6	246	496	148	370	448	56246496001		
		228	159					246	496	198			56246496002		
			176					246	546		420	498	56246546001		
			193					246	596		470	548	56246596001		
26	19	234	214	4	M4	90	6	266	246	176	136	206	56266246001		
			132	6				266	296		186	256	56266296001		
26	19	264	164	4	M4	90	6	296	196	206	86	156	56296196001		
			214				8	296	246				56296246001		
							6	296	246		136	206	56296246002		
30	21	278	228					296	246	248	120	198	56296246003		
26	19	264	132	6			8	296	296	206	136	206	56296296001		
30	21							296	296	198	170	248	56296296002		
								296	296	248	120	198	56296296003		
		278	139					296	296		170	248	56296296004		
		264	157					296	346	198	220	298	56296346001		
								296	346	248	120	198	56296346002		
								296	346		170	248	56296346003		
		278	164					296	346		220	298	56296346004		
		264	182					296	396	198	270	348	56296396001		
								296	396	248	170	248	56296396002		
		278	189					296	396		270	348	56296396003		
		264	207					296	446	198	320	398	56296446001		
								296	446	248	220	298	56296446002		
								296	446		270	348	56296446003		
		278	214					296	446		320	398	56296446004		
		264	155	8				296	496	198	370	448	56296496001		
		278	159					296	496	248			56296496002		
		264	171					296	546	198	420	498	56296546001		
		278	176					296	546	248			56296546002		
		264	188					296	596	198	470	548	56296596001		
								296	596	248	320	398	56296596002		
								296	596		370	448	56296596003		
		278	193					296	596		470	548	56296596004		
			209					296	646		520	598	56296646001		
			226					296	696		570	648	56296696001		
30	21	298	164	6	M4	90	8	316	346	268	220	298	56316346001		
			189					316	396		270	348	56316396001		

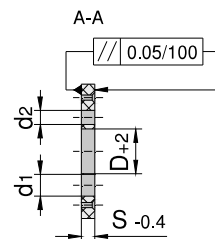
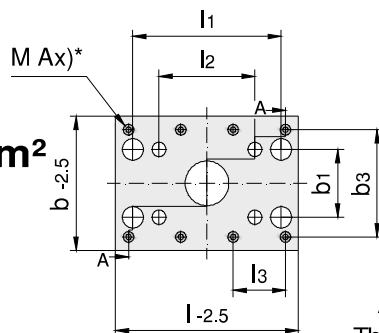
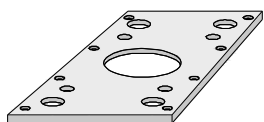
N 56

Insulating Board $P = 330 \text{ N/mm}^2$

Ordering-Example:

1 Piece 56316446001

Ax)* Number Of Screw Holes



Application Temperature: 200°C
Thermal Conductivity: $0,18 \text{ W/mk}$

Dense: $1,8 \text{ g/cm}^3$

Special Sizes Available On Request

d1	d2	b3	l3	Ax	M	D	s	b	l	b1	l2	l1	Part Number	1 pc. €	from 2 pcs. €
30	21	284	207	6	M4	90	8	316	446	268	220	298	56316446001		
								316	446	268	270	348	56316446002		
30	21	314	214	4	M4	90	6	346	246	248	120	198	56346246001		
			132	6			8	346	296				56346296001		
								346	296		170	248	56346296002		
		328	139					346	296	298			56346296003		
		314	157					346	346	248			56346346001		
								346	346		220	298	56346346002		
		328	164					346	346	298	170	248	56346346003		
		314	182					346	346		220	298	56346346004		
								346	396	248	270	348	56346396001		
								346	396	298	170	248	56346396002		
								346	396		220	298	56346396003		
42	27	322	186		M5			346	396	274	230	324	56346396004		
30	21	314	207		M4			346	446	248	320	398	56346446001		
								346	446	298	220	298	56346446002		
42	27	306	203		M5			346	446	274	230	324	56346446003		
		322	211					346	446		280	374	56346446004		
30	21	314	155	8	M4			346	496	248	370	448	56346496001		
42	27	322	157		M5			346	496	274	330	424	56346496002		
30	21	314	171		M4			346	546	248	420	498	56346546001		
42	27	322	174		M5			346	546	274	380	474	56346546002		
30	21	314	188		M4			346	596	248	470	548	56346596001		
42	27	306	185		M5			346	596	274	280	374	56346596002		
								346	596		330	424	56346596003		
		322	191					346	596		430	524	56346596004		
30	21	314	204		M4			346	646	248	520	598	56346646001		
42	27	322	207		M5			346	646	274	480	574	56346646002		
30	21	314	221		M4			346	696	248	570	648	56346696001		
42	27	322	224		M5			346	696	274	530	624	56346696002		
			257					346	796		630	724	56346796001		
30	21	334	157	6	M4	90	8	366	346	268	220	298	56366346001		
			182					366	396		270	348	56366396001		
30	21	364	132	6	M4	90	8	396	296	298	170	248	56396296001		
			157					396	346				56396346001		
								396	346		220	298	56396346002		
			182					396	396				56396396001		

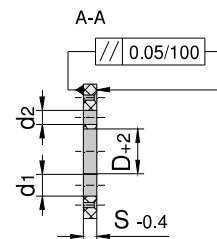
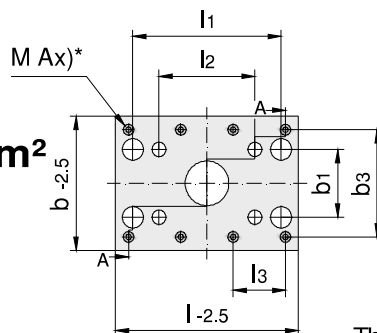
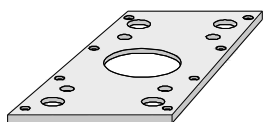
N 56

Insulating Board $P = 330 \text{ N/mm}^2$

Ordering-Example:

1 Piece 56396396002

Ax)* Number Of Screw Holes



Application Temperature: 200°C
Thermal Conductivity: $0,18 \text{ W/mk}$

Dense: $1,8 \text{ g/cm}^3$

Special Sizes Available On Request

d1	d2	b3	l3	Ax	M	D	s	b	l	b1	l2	l1	Part Number	1 pc. €	from 2 pcs. €
42	27	356	178	6	M5	90	8	396	396	274	230	324	56396396002		
		372	186					396	396	324			56396396003		
		356	203					396	446	274	280	374	56396446001		
								396	446	324	230	324	56396446002		
		372	211					396	446		280	374	56396446003		
		356	152	8				396	496	274	330	424	56396496001		
		372	157					396	496	324			56396496002		
		356	169					396	546	274	380	474	56396546001		
		372	174					396	546	324			56396546002		
		356	185					396	596	274	430	524	56396596001		
								396	596	324	280	374	56396596002		
								396	596		330	424	56396596003		
		372	191					396	596		430	524	56396596004		
		356	202					396	646	274	480	574	56396646001		
		372	207					396	646	324			56396646002		
		356	219					396	696	274	530	624	56396696001		
		372	224					396	696	324			56396696002		
		356	252					396	796	274	630	724	56396796001		
		372	257					396	796	324			56396796002		
42	27	406	178	6	M5	90	8	446	396	324	230	324	56446396001		
			203					446	446		280	374	56446446001		
		422	211					446	446	374			56446446002		
		406	152	8				446	496	324	330	424	56446496001		
		422	157					446	496	374			56446496002		
		406	169					446	546	324	380	474	56446546001		
		422	174					446	546	374			56446546002		
		406	185					446	596	324	430	524	56446596001		
								446	596	374	280	374	56446596002		
								446	596		330	424	56446596003		
		422	191					446	596		430	524	56446596004		
		406	202					446	646	324	480	574	56446646001		
		422	207					446	646	374			56446646002		
		406	219					446	696	324	530	624	56446696001		
		422	224					446	696	374			56446696002		
		406	252					446	796	324	630	724	56446796001		
		422	257					446	796	374			56446796002		
42	27	456	203	6	M5	90	8	496	446	374	280	374	56496446001		

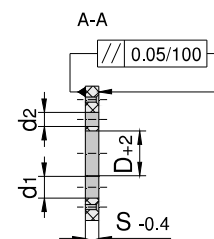
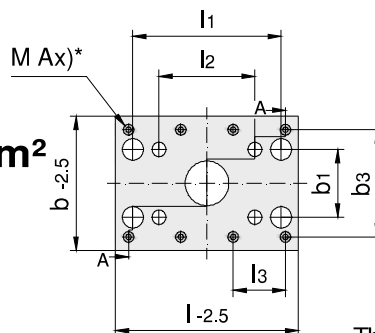
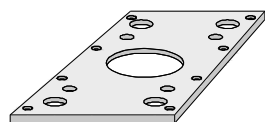
N 56

Insulating Board $P = 330 \text{ N/mm}^2$

Ordering-Example:

1 Piece 56496496001

Ax)* Number Of Screw Holes



Application Temperature: 200°C
Thermal Conductivity: $0,18 \text{ W/mk}$

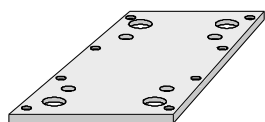
Dense: $1,8 \text{ g/cm}^3$

Special Sizes Available On Request

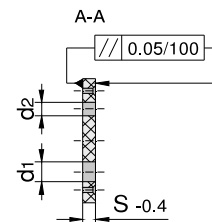
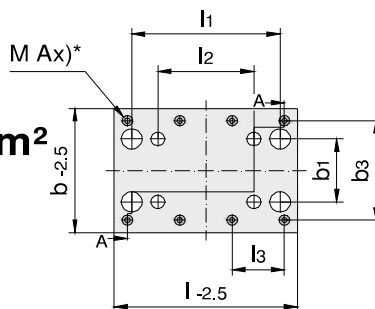
d1	d2	b3	l3	Ax	M	D	s	b	l	b1	l2	l1	Part Number	1 pc. €	from 2 pcs. €
42	27	456	152	8	M5	90	8	496	496	374	330	424	56496496001		
		472	157					496	496	424			56496496002		
		456	169					496	546	374	380	474	56496546001		
		472	174					496	546	424			56496546002		
		456	185					496	596	374	430	524	56496596001		
		472	191					496	596	424	330	424	56496596002		
		456	202					496	646	374	480	574	56496646001		
		472	207					496	646	424			56496646002		
		456	219					496	696	374	530	624	56496696001		
		472	224					496	696	424			56496696002		
		456	252					496	796	374	630	724	56496796001		
54	33	468	256					496	796	408	590	708	56496796002		
42	27	506	152	8	M5	90	8	546	496	424	330	424	56546496001		
			169					546	546		380	474	56546546001		
		522	174					546	546	474			56546546002		
		506	185					546	596	424	430	524	56546596001		
54	33	518	189					546	596	458	390	508	56546596002		
42	27	506	202					546	646	424	480	574	56546646001		
54	33	518	206					546	646	458	440	558	56546646002		
42	27	506	219					546	696	424	530	624	56546696001		
54	33	518	223					546	696	458	490	608	56546696002		
		506	252					546	796	408	590	708	56546796001		
		518	256					546	796	458			56546796002		
42	27	556	169	8	M5	90	8	596	546	474	380	474	56596546001		
54	33		185					596	596	458	390	508	56596596001		
		568	189					596	596	508			56596596002		
		556	202					596	646	458	440	558	56596646001		
		568	206					596	646	508			56596646002		
		556	219					596	696	458	490	608	56596696001		
		568	223					596	696	508			56596696002		
		556	252					596	796	458	590	708	56596796001		
		568	256					596	796	508			56596796002		
54	33	606	185	8	M5	90	8	646	596	508	390	508	56646596001		
			202					646	646		440	558	56646646001		
			219					646	696		490	608	56646696001		
			252					646	796		590	708	56646796001		

N 57

Insulating Board $P = 330 \text{ N/mm}^2$



Ax)* Number Of Screw Holes



Ordering-Example:

1 Piece 57096096001

Special Sizes Available On Request

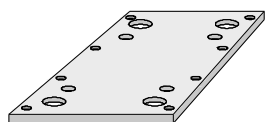
Application Temperature: 200°C
Thermal Conductivity: $0,18 \text{ W/mk}$

Dense: $1,8 \text{ g/cm}^3$

d1	d2	b3	l3	Ax	M	s	b	l	b1	l2	l1	Part Number	1 pc. €	from 2 pcs. €
14	16	74	50	4	M3	6	96	96	74	24	74	57096096001		
			80				96	126		54	104	57096126001		
			134				96	156		24	74	57096156001		
							96	156		54	104	57096156002		
14	16	104	80	4	M3	6	126	126	104	54	104	57126126001		
			134				126	156				57126156001		
20	19	94	92		M4		126	156	94	60	124	57126156002		
			214				126	246				57126246001		
14	16	134	74	4	M3	6	156	96	74	24	74	57156096001		
			104				156	126		54	104	57156126001		
							156	126	104			57156126002		
			134				156	156	74	24	74	57156156001		
							156	156		54	104	57156156002		
							156	156	104			57156156003		
20	19	124	124		M4		156	156	94	60	124	57156156004		
			92				156	156	124			57156156005		
			164				156	196				57156196001		
			132				156	196		100	164	57156196002		
			214				156	246		60	124	57156246001		
			182				156	246		150	214	57156246002		
			132	6			156	296		100	164	57156296001		
			132				156	296		150	214	57156296002		
			116				156	296		200	264	57156296003		
			141				156	346		250	314	57156346001		
			182				156	396		200	264	57156396001		
			207				156	446		250	314	57156446001		
20	19	164	92	4	M4	6	196	156	164	60	124	57196156001		
			164				196	196				57196196001		
26		156	118				196	196	156	86	156	57196196002		
20		164	214				196	246	124	150	214	57196246001		
							196	246	164	60	124	57196246002		
26							196	246	156	86	156	57196246003		
		156	168				196	246		136	206	57196246004		
20		164	132	6			196	296	124	200	264	57196296001		
26							196	296	156	86	156	57196296002		
							196	296		136	206	57196296003		
		156	109				196	296		186	256	57196296004		
20		164	157				196	346	124	250	314	57196346001		

N 57

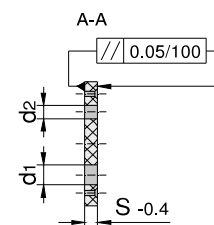
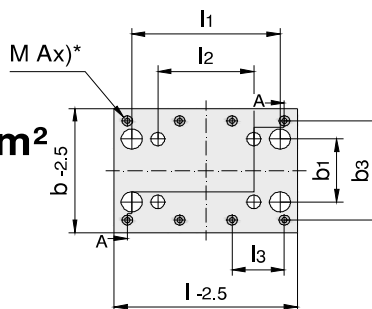
Insulating Board $P = 330 \text{ N/mm}^2$



Ordering-Example:

1 Piece 57196346002

Ax)* Number Of Screw Holes



Application Temperature: 200°C
Thermal Conductivity: $0,18 \text{ W/mk}$

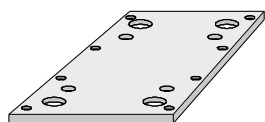
Dense: $1,8 \text{ g/cm}^3$

Special Sizes Available On Request

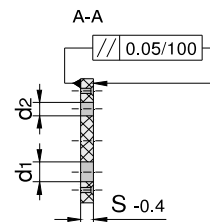
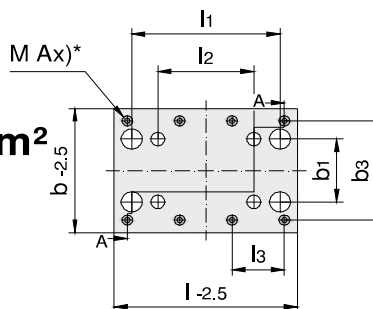
d1	d2	b3	l3	Ax	M	s	b	l	b1	l2	l1	Part Number	1 pc. €	from 2 pcs. €									
30	21	178	164	6	M4	6	196	346	148	220	298	57196346002											
26	19	164	182				196	396	156	186	256	57196396001											
30	21	178	189				196	396	148	270	348	57196396002											
			164	207				196		446	220	298	57196446001										
		178	214				196	446		270	348	57196446002											
			159	8			196	446		320	398	57196446003											
			159	8			196	496		370	448	57196496001											
20	19	174	124	4	M4	6	206	156	124	60	124	57206156001											
			164					206		196	57206196001												
								206		196	100	164	57206196002										
26	19	176	168	4	M4	6	216	246	176	136	260	57216246001											
			184	132	6			216		296	206	57216296001											
			176	109				216		296	186	256	57216296002										
			184	182				216		396			57216396001										
20	19	214	124	4	M4	6	246	156	164	60	124	57246156001											
			164					246		196	57246196001												
			26												246	196	156	86	156	57246196002			
															246	196	206			57246196003			
																246	246	156			57246246001		
																246	246		136	206	57246246002		
																246	246	206	86	156	57246246003		
																246	246		136	206	57246246004		
																246	296	156	186	256	57246296001		
																246	296	206	86	156	57246296002		
																246	296		136	206	57246296003		
																246	296				57246296004		
			30	21	228	139					246	296	198	170	248	57246296005							
214	157							246	346	148	220	298	57246346001										
26	19						246	346	206	136	206	57246346002											
30	21	228	164				246	346	198	220	298	57246346003											
			214	182				246	396	148	270	348	57246396001										
		228	189										246	396	198	170	248	57246396002					
													246	396		270	348	57246396003					
		214	207											246	446	148	320	398	57246446001				
														246	446	198	220	298	57246446002				
														246	446		270	348	57246446003				
														246	446		320	398	57246446004				

N 57

Insulating Board $P = 330 \text{ N/mm}^2$



Ax)* Number Of Screw Holes



Ordering-Example:

1 Piece 57246496001

Special Sizes Available On Request

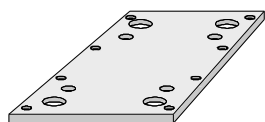
Application Temperature: 200°C
Thermal Conductivity: $0,18 \text{ W/mk}$

Dense: $1,8 \text{ g/cm}^3$

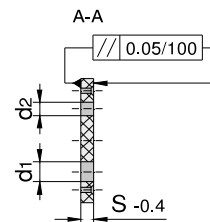
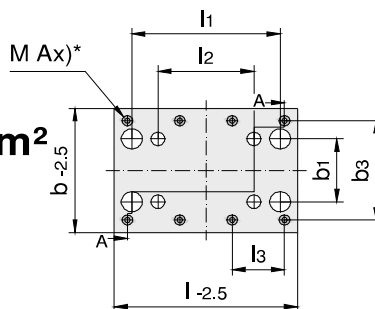
d1	d2	b3	l3	Ax	M	s	b	l	b1	l2	l1	Part Number	1 pc. €	from 2 pcs. €		
30	21	214	155	8	M4	6	246	496	148	370	448	57246496001				
			228				159	198				57246496002				
				176				420	498	57246546001						
				193			470	548	57246596001							
26	19	234	214	4	M4	6	266	246	176	136	206	57266246001				
			132	6		266	296	186		256	57266296001					
26	19	264	164	4	M4	6	296	196	206	86	156	57296196001				
			214			8	296	246				57296246001				
						6	296	246		136	206	57296246002				
30	21	278	228				296	246	248	120	198	57296246003				
26	19	264	132	6		8	296	296	206	136	206	57296296001				
30	21	278	139						296	296	198	170	248	57296296002		
				296		296								248	120	198
		264	157						296	346	198	220	298	57296346001		
														296	346	248
		278	164						296	346		220	298	57296346004		
														296	346	170
		264	182						296	396	198	270	348	57296396001		
														296	396	248
		278	189						296	396		270	348	57296396003		
														296	446	198
		264	207						296	446	248	220	298	57296446002		
														296	446	270
		278	214						296	446		320	398	57296446004		
														296	496	198
		264	155			8			296	496	248			57296496002		
														296	546	198
278	159						296	546	248			57296546002				
												296	596	198	470	548
264	171						296	596	248	320	398	57296596002				
												296	596	370	448	57296596003
278	176						296	596		470	548	57296596004				
												296	646	520	598	57296646001
264	188						296	696		570	648	57296696001				
												296	596	470	548	57296596004
30	21	298	164	6	M4	8	316	346	268	220	298	57316346001				
			189				316	396		270	348	57316396001				

N 57

Insulating Board $P = 330 \text{ N/mm}^2$



Ax)* Number Of Screw Holes



Ordering-Example:

1 Piece 57316446001

Special Sizes Available On Request

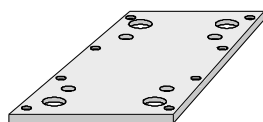
Application Temperature: 200°C
Thermal Conductivity: $0,18 \text{ W/mk}$

Dense: $1,8 \text{ g/cm}^3$

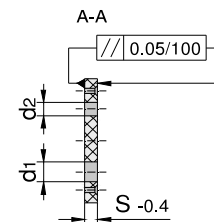
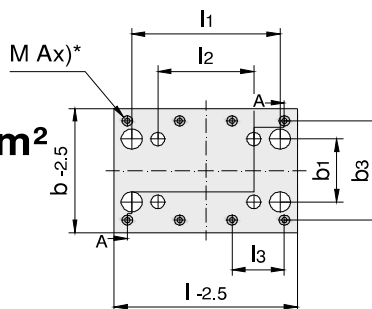
d1	d2	b3	l3	Ax	M	s	b	l	b1	l2	l1	Part Number	1 pc. €	from 2 pcs. €
30	21	284	207	6	M4	8	316	446	268	220	298	57316446001		
							316	446		270	348	57316446002		
30	21	314	214	4	M4	6	346	246	248	120	198	57346246001		
			132	6		8	346	296				57346296001		
							346	296		170	248	57346296002		
		328	139				346	296	298			57346296003		
		314	157				346	346	248			57346346001		
							346	346		220	298	57346346002		
		328	164				346	346	298	170	248	57346346003		
		314	182				346	346		220	298	57346346004		
							346	396	248	270	348	57346396001		
							346	396	298	170	248	57346396002		
							346	396		220	298	57346396003		
42	27	322	186		M5		346	396	274	230	324	57346396004		
30	21	314	207		M4		346	446	248	320	398	57346446001		
							346	446	298	220	298	57346446002		
42	27	306	203		M5		346	446	274	230	324	57346446003		
		322	211				346	446		280	374	57346446004		
30	21	314	155	8	M4		346	496	248	370	448	57346496001		
42	27	322	157		M5		346	496	274	330	424	57346496002		
30	21	314	171		M4		346	546	248	420	498	57346546001		
42	27	322	174		M5		346	546	274	380	474	57346546002		
30	21	314	188		M4		346	596	248	470	548	57346596001		
42	27	306	185		M5		346	596	274	280	374	57346596002		
							346	596		330	424	57346596003		
		322	191				346	596		430	524	57346596004		
30	21	314	204		M4		346	646	248	520	598	57346646001		
42	27	322	207		M5		346	646	274	480	574	57346646002		
30	21	314	221		M4		346	696	248	570	648	57346696001		
42	27	322	224		M5		346	696	274	530	624	57346696002		
			257				346	796		630	724	57346796001		
30	21	334	157	6	M4	8	366	346	268	220	298	57366346001		
			182				366	396		270	348	57366396001		
30	21	364	132	6	M4	8	396	296	298	170	248	57396296001		
			157				396	346				57396346001		
							396	346		220	298	57396346002		
			182				396	396				57396396001		

N 57

Insulating Board $P = 330 \text{ N/mm}^2$



Ax)* Number Of Screw Holes



Ordering-Example:

1 Piece 57396396002

Special Sizes Available On Request

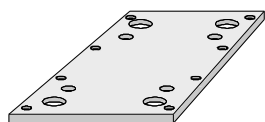
Application Temperature: 200°C
Thermal Conductivity: $0,18 \text{ W/mk}$

Dense: $1,8 \text{ g/cm}^3$

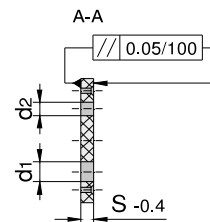
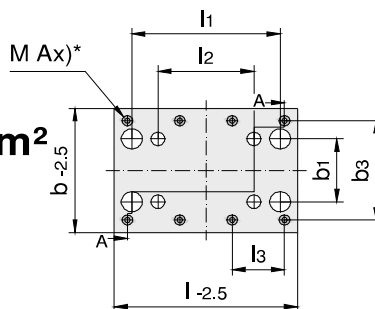
d1	d2	b3	l3	Ax	M	s	b	l	b1	l2	l1	Part Number	1 pc. €	from 2 pcs. €				
42	27	356	178	6	M5	8	396	396	274	230	324	57396396002						
		372	186				396	396	324			57396396003						
		356	203				396	446	274	280	374	57396446001						
							396	446	324	230	324	57396446002						
		372	211	8			396	446		280	374	57396446003						
		356	152				396	496	274	330	424	57396496001						
		372	157				396	496	324			57396496002						
		356	169				396	546	274	380	474	57396546001						
		372	174				396	546	324			57396546002						
		356	185				396	596	274	430	524	57396596001						
							396	596	324	280	374	57396596002						
							396	596		330	424	57396596003						
		372	191	396			596		430	524	57396596004							
		356	202	396			646	274	480	574	57396646001							
		372	207	396			646	324			57396646002							
		356	219	396			696	274	530	624	57396696001							
		372	224	396			696	324			57396696002							
		356	252	396			796	274	630	724	57396796001							
		372	257	396			796	324			57396796002							
		42	27	406			178	6	M5	8	446	396	324	230	324	57446396001		
	203			446	446		280				374	57446446001						
422	211			446	446	374						57446446002						
406	152			446	496	324	330				424	57446496001						
422	157			8	446	496	374					57446496002						
406	169				446	546	324	380			474	57446546001						
422	174				446	546	374					57446546002						
406	185				446	596	324	430			524	57446596001						
					446	596	374	280			374	57446596002						
					446	596		330			424	57446596003						
422	191				446	596		430			524	57446596004						
406	202				446	646	324	480			574	57446646001						
422	207			446	646	374					57446646002							
406	219			446	696	324	530	624			57446696001							
422	224			446	696	374					57446696002							
406	252			446	796	324	630	724			57446796001							
422	257			446	796	374					57446796002							
42	27			456	203	6	M5	8			496	446	374	280	374	57496446001		

N 57

Insulating Board $P = 330 \text{ N/mm}^2$



Ax)* Number Of Screw Holes



Ordering-Example:

1 Piece 57496496001

Special Sizes Available On Request

Application Temperature: 200°C
Thermal Conductivity: $0,18 \text{ W/mk}$

Dense: $1,8 \text{ g/cm}^3$

d1	d2	b3	l3	Ax	M	s	b	l	b1	l2	l1	Part Number	1 pc. €	from 2 pcs. €		
42	27	456	152	8	M5	8	496	496	374	330	424	57496496001				
		472	157				496	496	424			57496496002				
		456	169				496	546	374			380	474	57496546001		
		472	174				496	546	424			57496546002				
		456	185				496	596	374			430	524	57496596001		
		472	191				496	596	424			330	424	57496596002		
		456	202				496	646	374			480	574	57496646001		
		472	207				496	646	424			57496646002				
		456	219				496	696	374			530	624	57496696001		
		472	224				496	696	424			57496696002				
		456	252				496	796	374			630	724	57496796001		
		54	33				468	256						496	796	408
42	27	506	152	8	M5	8	546	496	424	330	424	57546496001				
			169				546	546				380	474	57546546001		
		522	174				546	546	474			57546546002				
		506	185				546	596	424			430	524	57546596001		
54	33	518	189				546	596	458	390	508	57546596002				
42	27	506	202				546	646	424	480	574	57546646001				
54	33	518	206				546	646	458	440	558	57546646002				
42	27	506	219				546	696	424	530	624	57546696001				
54	33	518	223				546	696	458	490	608	57546696002				
		506	252	546	796	408	590	708	57546796001							
		518	256	546	796	458	57546796002									
42	27	556	169	8	M5	8	596	546	474	380	474	57596546001				
54	33		185				596	596	458	390	508	57596596001				
		568	189	596	596	508	57596596002									
		556	202	596	646	458	440	558	57596646001							
		568	206	596	646	508	57596646002									
		556	219	596	696	458	490	608	57596696001							
		568	223	596	696	508	57596696002									
		556	252	596	796	458	590	708	57596796001							
		568	256	596	796	508	57596796002									
54	33	606	185	8	M5	8	646	596	508	390	508	57646596001				
			202				646	646		440	558	57646646001				
			219				646	696		490	608	57646696001				
			252				646	796		590	708	57646796001				